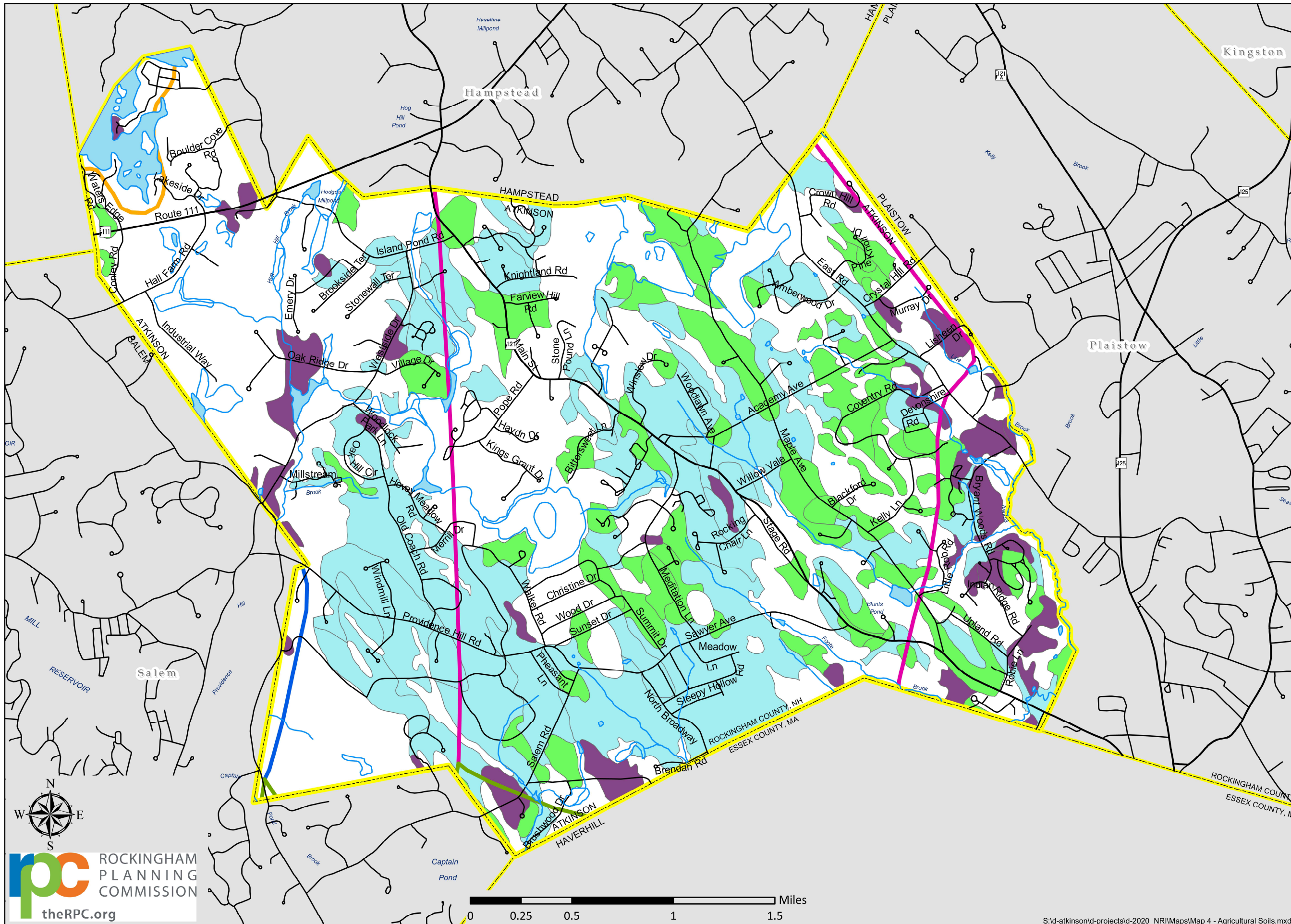


Map 4 - Agricultural Soils

Map 4

Land Conservation Plan Atkinson, NH 2022



- Soil Type**
- CANTON-HOLLIS-CHATFIELD (NH012)
 - CANTON-MONTAUK-PAXTON (NH014)
 - CANTON-SCITUATE-MONTAUK (NH036)
 - HINCKLEY-WINDSOR-CANTON (NH001)
 - PAXTON-WOODBRIDGE-HOLLIS (NH033)

- Agricultural Soil Class**
- All areas are prime farmland
 - Farmland of statewide importance
 - Farmland of local importance

Agricultural Soils
Prime farmland is land that has the best combination of physical and chemical characteristics for producing food, feed, forage, fiber and oilseed crops they have an adequate and dependable water supply from precipitation or irrigation.

Additional Farmland of Statewide Importance
nearly prime farmland and that economically produce high yields of crops when treated and managed according to acceptable farming methods. Some may produce as high a yield as prime farmlands if conditions are favorable.

Additional Farmland of Local Importance
In some local areas there is concern for certain additional farmlands for the production of food, feed, fiber, forage, and oilseed crops, even though these lands are not identified as having national or statewide importance.

Base Features (transportation, political and hydrographic) were automated from the USGS Digital Line Graph data, 1:24,000, and archived in the GRANIT database at Complex Systems Research Center, Institute for the study of Earth, Oceans and Space, University of New Hampshire, Durham, NH; 1992-1999. The roads have been updated by Rockingham Planning Commission and by NH Dept. of Transportation through ongoing efforts.

Digital Data in NH GRANIT represent the efforts of the contributing agencies to record information from the cited source materials. Complex Systems Research Center (CSRC), under contract to the Office of State Planning (OSP), and in consultation with cooperating agencies, maintains a continuing program to identify and correct errors in these data. OSP, CSRC, and the cooperating agencies make no claim as to the validity or reliability or to any implied uses of these data.

