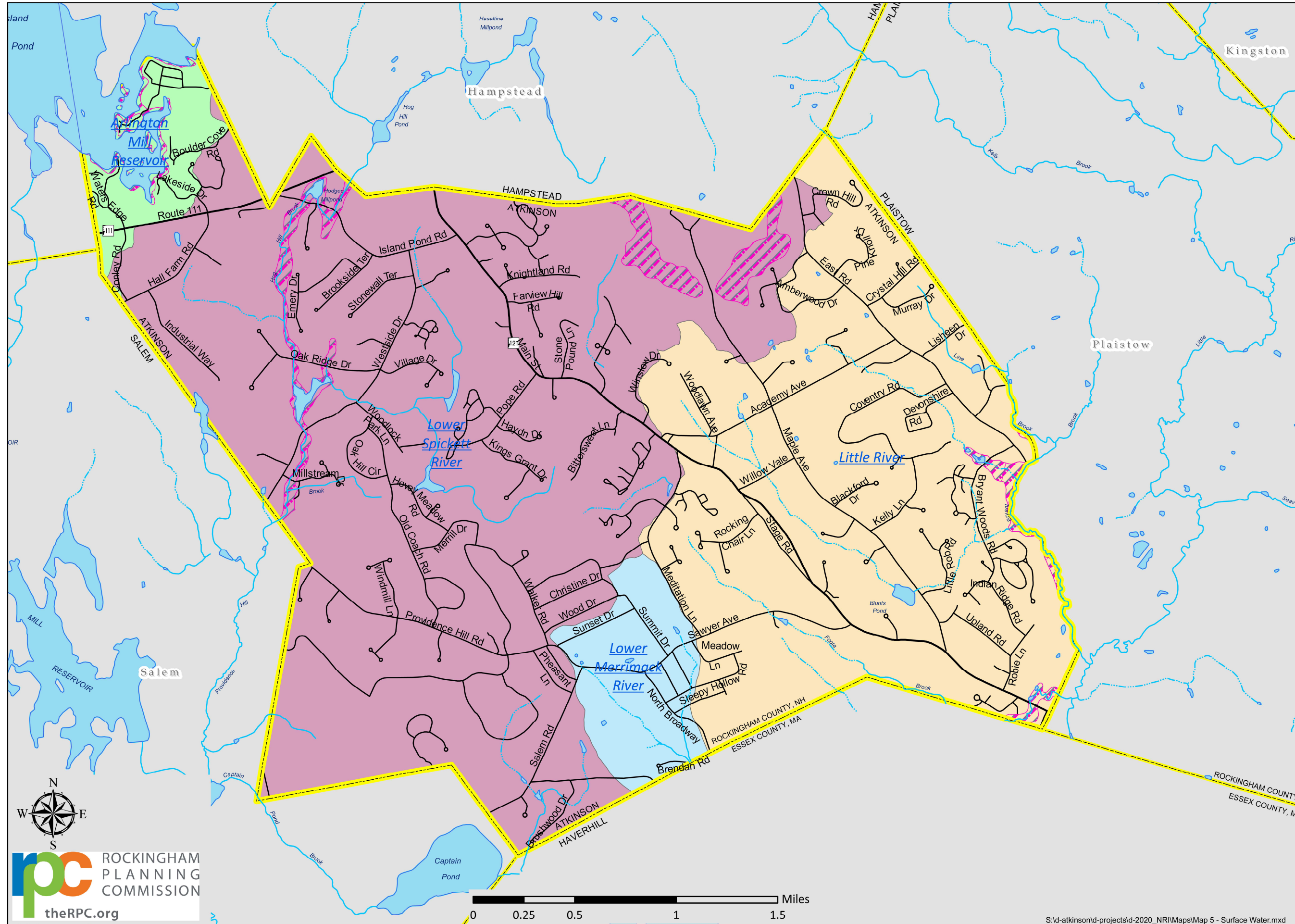


## Land Conservation Plan Atkinson, NH 2022



**FEMA Flood Hazard Zone**

- 1% Annual Risk (100 Year Flood)
- 0.2% Annual Risk (500 Year Flood)

**Watersheds**

**HUC 12 Name**

- Arlington Mill Reservoir
- Little River
- Lower Merrimack River
- Lower Spickett River
- Stream
- Intermittent Stream

**Flood Hazard Zones**

Flood Hazard Areas on this map are FEMA Q3 Flood Data. This information was extracted from the Federal Emergency Management Agency, National Flood Insurance Program, Q3 Flood Data DISC 23 (Maine, New Hampshire, Vermont). For more information about flood hazard areas, consult the following website: <http://www.fema.gov>.

**Watersheds (HUC 12)**

Watershed boundaries were delineated and automated by the New Hampshire Department of Environmental Services, Water Resources Division. Source maps for this data layer are USGS 1:24,000 Topographic Quadrangle maps and USDA Natural Resources Conservation Service 1:250,000 watershed maps.

Base Features (transportation, political and hydrographic) were automated from the USGS Digital Line Graph data, 1:24,000, and archived in the GRANIT database at Complex Systems Research Center, Institute for the study of Earth, Oceans and Space, University of New Hampshire, Durham, NH; 1992-1999. The roads have been updated by Rockingham Planning Commission and by NH Dept. of Transportation through ongoing efforts.

Digital Data in NH GRANIT represent the efforts of the contributing agencies to record information from the cited source materials. Complex Systems Research Center (CSRC), under contract to the Office of State Planning (OSP), and in consultation with cooperating agencies, maintains a continuing program to identify and correct errors in these data. OSP, CSRC, and the cooperating agencies make no claim as to the validity or reliability or to any implied uses of these data.

