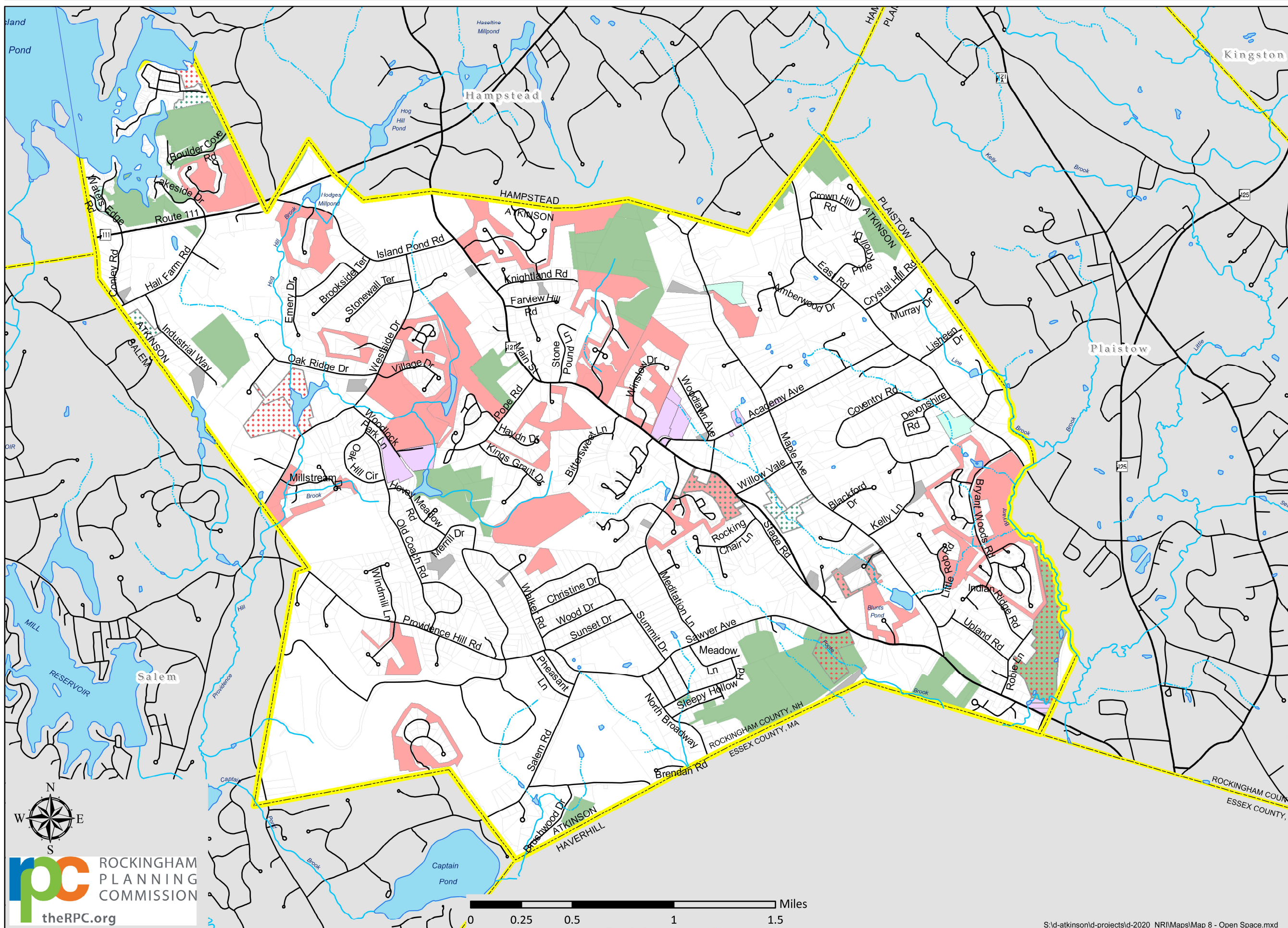


Map 8 - Open Space

Map 8

Land Conservation Plan Atkinson, NH 2022



Town Conservation Designation

- Conservation (Town Forest)
- Town holds Conservation Easement
- Town Forest / 3rd party conservation easement
- Privately owned Cons. Easement by 3rd Party
- Development Associated Open Space
- Dev't Assoc Open Space and Town Cons. Case.
- Municipal / Conservation Deed Restrictions
- Municipal Land
- Other RSA 36-A:4 conservation land
- Undesignated Town-owned
- None but shows in GRANIT
- Atkinson Parcels 2020

Conservation and Public Lands

The conservation lands data layer describes parcels of land of two or more acres that are mostly undeveloped and are protected from future development. Unique or adjoining smaller parcels, as well as selected state-owned parcels, may also be included.

Base Features (transportation, political and hydrographic) were automated from the USGS Digital Line Graph data, 1:24,000, and archived in the GRANIT database at Complex Systems Research Center, Institute for the study of Earth, Oceans and Space, University of New Hampshire, Durham, NH; 1992-1999. The roads have been updated by Rockingham Planning Commission and by NH Dept. of Transportation through ongoing efforts.

Digital Data in NH GRANIT represent the efforts of the contributing agencies to record information from the cited source materials. Complex Systems Research Center (CSRC), under contract to the Office of State Planning (OSP), and in consultation with cooperating agencies, maintains a continuing program to identify and correct errors in these data. OSP, CSRC, and the cooperating agencies make no claim as to the validity or reliability or to any implied uses of these data.

