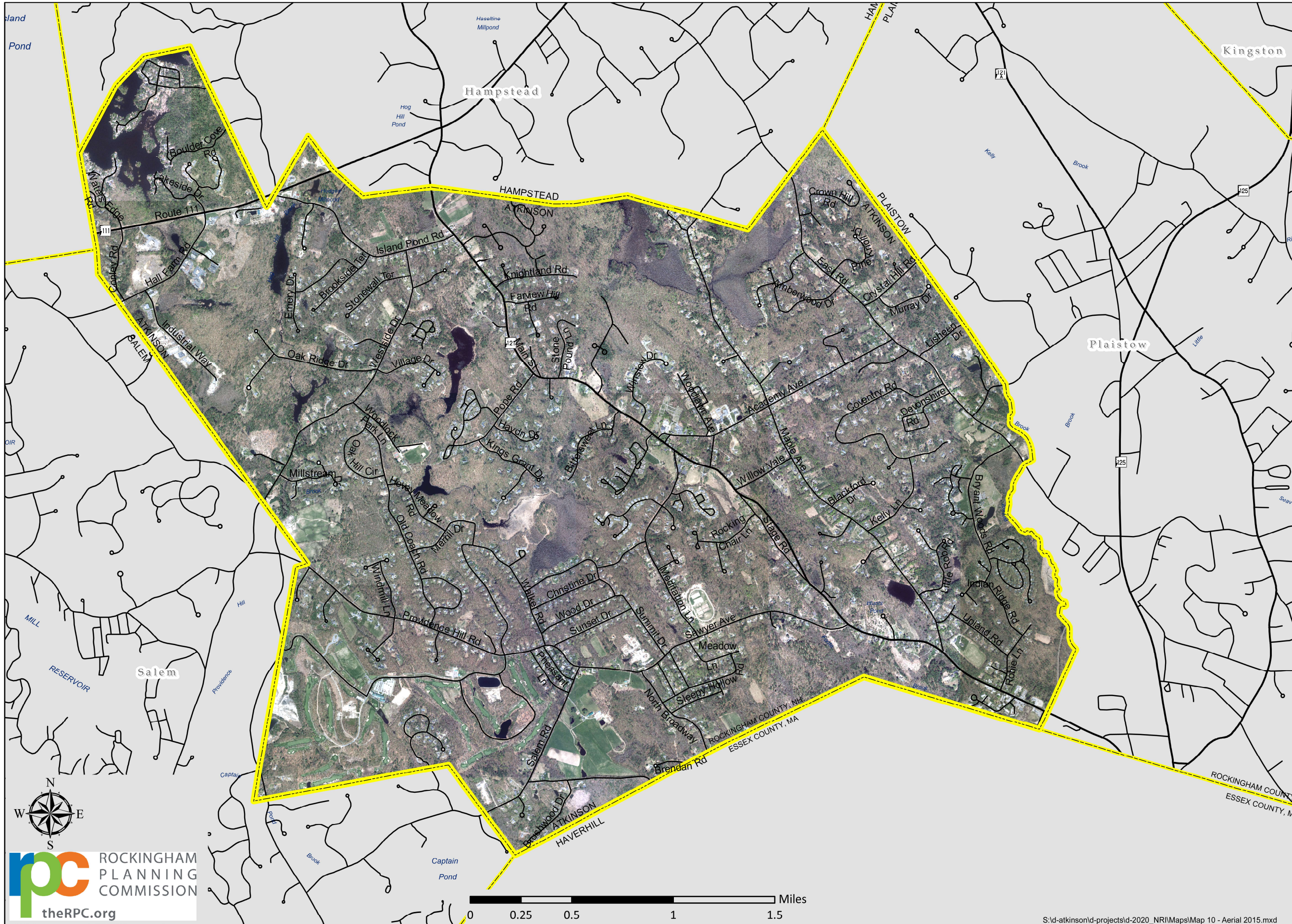


Land Conservation Plan Atkinson, NH 2022



2015 NHDOT / USGS 1' Aerial Photo
 The New Hampshire Department of Transportation partnered with the US Geological Survey (USGS) and additional state and federal partners to acquire high resolution, leaf-off, color, aerial photography.
 This 1' (.35m) GSD multispectral digital orthoimagery was compiled to meet a 3.0 meter (9.84') horizontal accuracy at 95% confidence level based on NSSDA testing guidelines. These images were geometrically corrected to achieve a uniform scale. Each frame was adjusted for topographic relief, lens distortion and camera tilt.
 The NH Department of Transportation shall not be held liable for any errors in this data. This includes errors of omission, errors of commission, content errors, and relative and positional accuracy errors in the data. This data should not be construed to be a legal document. Primary sources from which this data was compiled must be consulted for verification of information contained in this data. This data is in the public domain, and may not be resold.

A more recent aerial photo can be found in Appendix B, Map J

Base Features (transportation, political and hydrographic) were automated from the USGS Digital Line Graph data, 1:24,000, and archived in the GRANIT database at Complex Systems Research Center, Institute for the study of Earth, Oceans and Space, University of New Hampshire, Durham, NH; 1992-1999. The roads have been updated by Rockingham Planning Commission and by NH Dept. of Transportation through ongoing efforts.

Digital Data in NH GRANIT represent the efforts of the contributing agencies to record information from the cited source materials. Complex Systems Research Center (CSRC), under contract to the Office of State Planning (OSP), and in consultation with cooperating agencies, maintains a continuing program to identify and correct errors in these data. OSP, CSRC, and the cooperating agencies make no claim as to the validity or reliability or to any implied uses of these data.