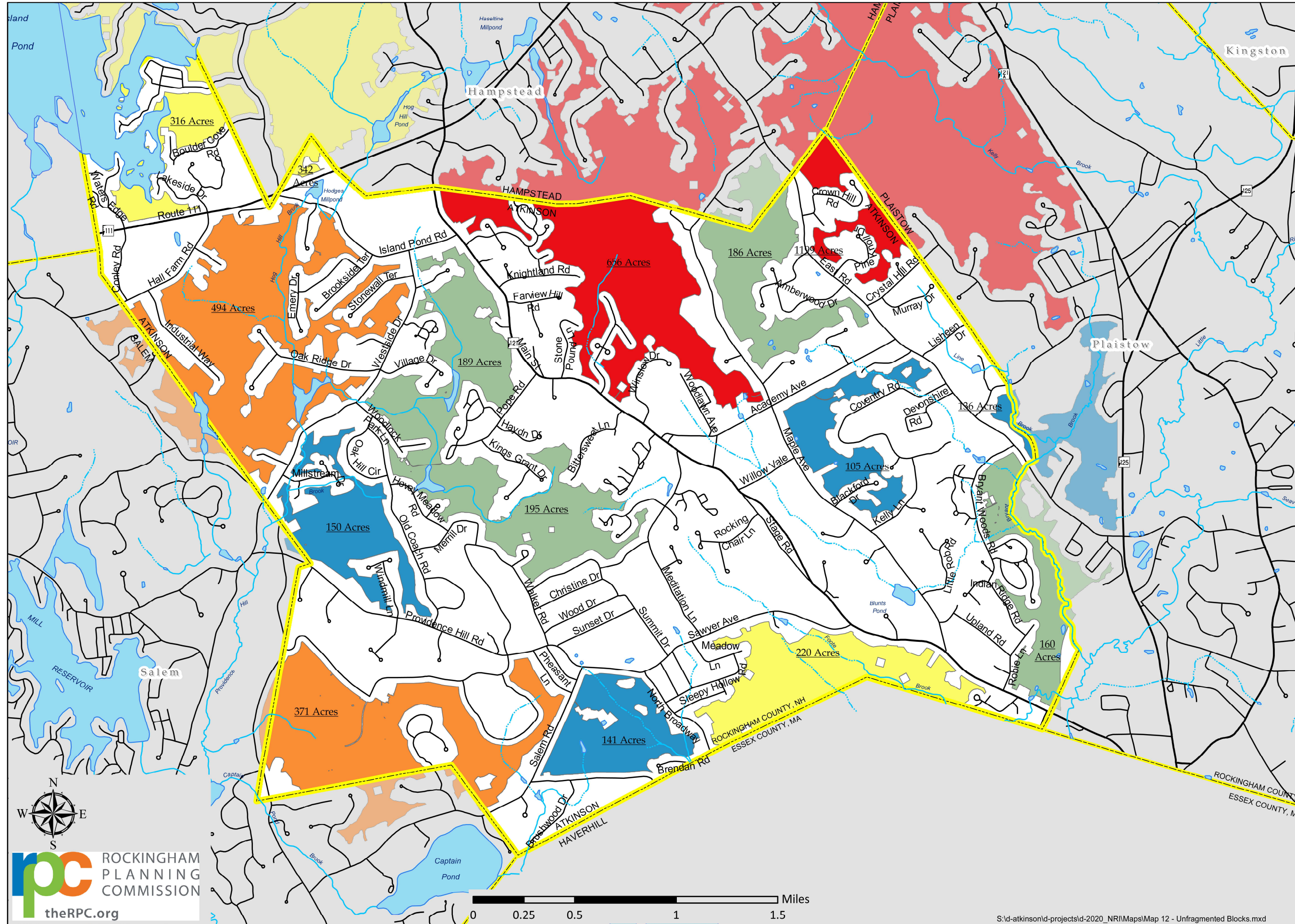


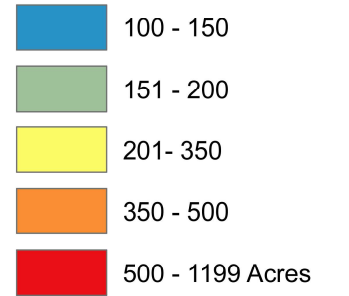
# Map 12 - Unfragmented Blocks

# Map 12

## Open Space Plan Atkinson, NH 2022



### Unfragmented Blocks



### Unfragmented Habitat Blocks

Unfragmented habitat blocks were generated by selecting the natural landcover classes in the 2015 NH Land Use data. The developed land use classes and a combined buffer of 2021 NHDOT roads class I-V and USGS 1:24,000-scale class I-IV roads were considered fragmenting features. Habitat blocks were then ranked based on size.

Sizes shown here can extend beyond Atkinson town boundaries.

Base Features (transportation, political and hydrographic) were automated from the USGS Digital Line Graph data, 1:24,000, and archived in the GRANIT database at Complex Systems Research Center, Institute for the study of Earth, Oceans and Space, University of New Hampshire, Durham, NH; 1992-1999. The roads have been updated by Rockingham Planning Commission and by NH Dept. of Transportation through ongoing efforts.

Digital Data in NH GRANIT represent the efforts of the contributing agencies to record information from the cited source materials. Complex Systems Research Center (CSRC), under contract to the Office of State Planning (OSP), and in consultation with cooperating agencies, maintains a continuing program to identify and correct errors in these data. OSP, CSRC, and the cooperating agencies make no claim as to the validity or reliability or to any implied uses of these data.

