

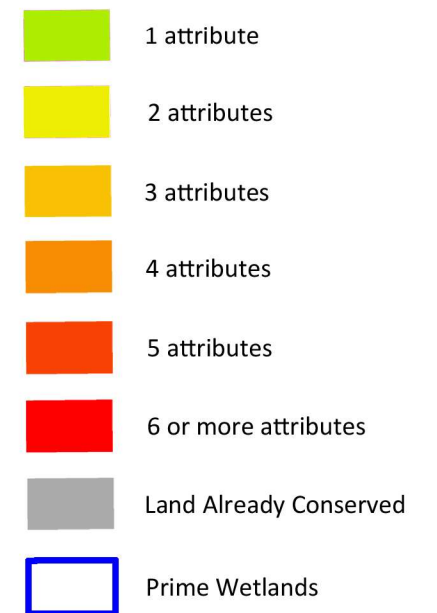
Land Conservation Plan Atkinson, NH 2022

Co-Occurrence Natural Resource Map
This map shows the number of natural resource attributes that exist at each point in the Town of Atkinson. It was created by layering natural resource attributes from other maps contained in this report, and counting the number of attributes that exist at each point. This co-occurrence value is shown by colors, as explained below.

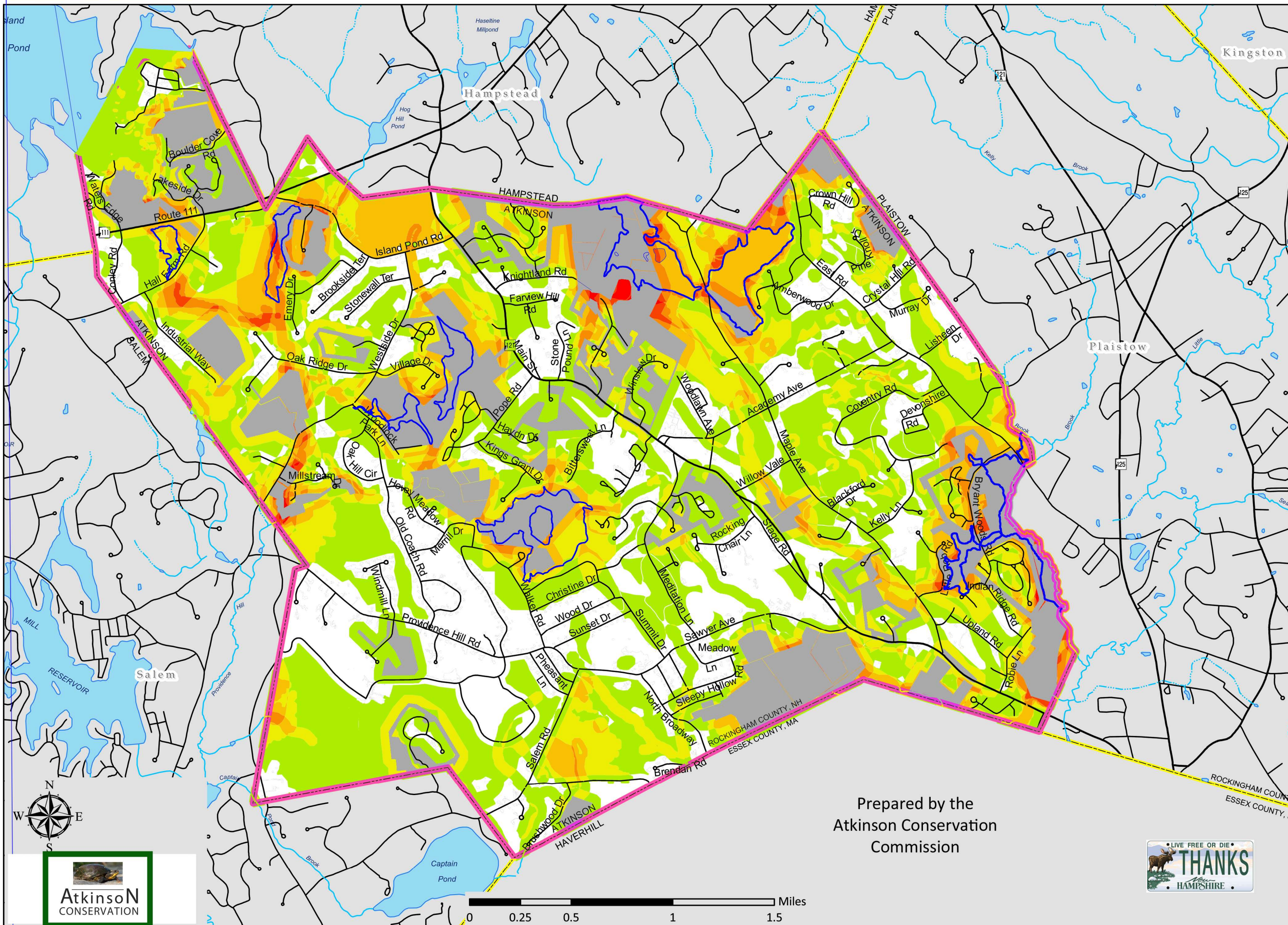
There are many factors to be considered when evaluating a land conservation opportunity. Other factors that cannot be easily enumerated include Rural Character, Scenic Vistas, vernal pools, and the willingness of landowners to want to preserve their land.

Natural Resource Attributes included in this map are:

- Map 4:** Farmland of statewide importance
- Map 6:** Above a stratified drift aquifer
- Map 7:** Within 300' of a Prime Wetland
- Map 8:** Within 200' of protected land
- Map 9:** Tier 1-3 WAP wildlife habitats
- Map 11:** Within 100' of a stream or pond
- Map 12:** Part of an unfragmented block
- Map 14:** Part of a wildlife corridor



Support was provided
by a Moose Plate
Conservation Grant



Prepared by the
Atkinson Conservation
Commission

