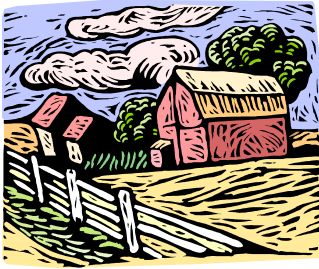


To conserve the future of Boscawen, please vote NO on Article 16



In 1988, the NH Legislature recognized the need to help towns and cities offset development with tools and resources for conservation. The resulting law enables and empowers communities to create their own support for conservation. By 2000, 87 towns and cities—including Boscawen—had created conservation funds. By 2005, that number increase to 138—almost 60% of NH. In 2001, the citizens of Boscawen decided to invest in their future by dedicating all of their land use change tax to conserving open space.

Open space benefits everyone

Hunters, hikers, skiers, snowmobilers, cyclists, and many others have asked for it. They know that when open space is conserved, it not only benefits their activities but also the town's finances by reducing the use of services including schools, police, and road maintenance.



More development raises the property taxes that we all pay

With more residential development and less open space, businesses, homeowners, and renters will see their taxes continue to rise to support the growth of the schools and town services. Conserving land helps reduce our taxes.



A Conservation Fund provides leverage for other funds

Only communities that have matching funds will be able to participate in programs such as the Land & Community Heritage Investment Program and federal land conservation funds. A conservation fund will also enable Boscawen to initiate projects with willing sellers and work with organizations such as the Society for the Protection of NH Forests and local land trusts.

There is very strong public support

In 1993, the citizens of Boscawen created their Conservation Fund. In 2001 without a dissenting vote, the citizens of Boscawen voted to dedicate 100% of these funds to conserving open space. This vote was reinforced in 2003. Please see reverse for more of Boscawen citizens' opinions.

Some unsettling trends...

From 1992 to 1997, 107,300 acres of open space were developed in NH. This means that we are losing over 20,000 acres of fields, forests, farms, and shoreland every year! With Boscawen's proximity to Concord, prime access from I-93, and regional development patterns moving north, Boscawen is right in the path of these increased pressures. Currently only 566 out of Boscawen's 16,256 acres are permanently protected. Since 1970, housing units have increased by over 42%. The population of Boscawen is expected to increase 22% by the year 2020. Please see the reverse side of the sheet for more statistics and trends.



The funds are currently and will continue to be held in trust for the people of Boscawen for land conservation.

Fast Facts

In New Hampshire

- NH's population has doubled since 1950 and is projected to triple by 2020
- Since 1974, over 24% of all cropland in New Hampshire has been converted to other uses
- New Hampshire has been losing over 20,000 acres of forest land to development each year

In Boscawen

- According to the survey conducted by the town for the Master Plan revision process, *89% of respondents indicated that they felt more land in Boscawen should be permanently conserved*
- In the same survey, 83% felt that open space was very important or important
- 67% of the respondents to the Master Plan Survey support acquisition of lands for conservation purposes
- 75% of those surveyed indicated that maintaining agriculture and forestry as economically viable land uses is important
- When the citizens of Boscawen overwhelmingly voted for this fund when it was established and unanimously voted down this same article two years ago.
- We are not alone: By 1999, 84 towns had dedicated Conservation Funds. By 2003, that list had grown to 128—almost 55% of NH—with many towns and cities increasing their allocations. The numbers increase each year: by 2005, 138 towns—almost 60% of NH—had implemented this valuable tool with many municipalities increasing their allocation.
- **This fund belongs to and is controlled by the citizens of Boscawen. The money does not belong to the Conservation Commission!**

**Boscawen is a leader in open space conservation—
please, let's not go backwards.**

**Everyone's funds together make a difference and will support open space conservation.
Every tax dollar paid by residential development costs taxpayers much more.**

Please don't mortgage Boscawen's future—vote NO on article 16.

*For further information, please contact Michele L. Tremblay, Chair,
Boscawen Conservation Commission, 116 North Main Street, Boscawen, NH 03303, 603.796.2615,
boscawencc@tds.net, or the other members of your Conservation Commission:*

Sylvia Bradford

Mark Ciarametaro

James F. Colby

Ray Powelson

Paul Fisher

Michael Jette

Norman LaPierre

Michele L. Tremblay



Sources: *The Dollars and Sense of Open Space* by the NH Wildlife Federation and the Society for the Protection of NH Forests, *New Hampshire's Changing Landscape*, Society for the Protection of NH Forests, 1998 *Natural, Cultural, and Historical Resources Inventory of the Central New Hampshire Region*, Central NH Regional Planning Commission, Boscawen town records, 2001-2002 *Boscawen Master Plan*, and maps from the Society for the Protection of NH Forests.

• *This document was entirely produced with private funding and is printed on 30% post-consumer recycled content paper •*