

TOWN OF ATKINSON CONSERVATION COMMISSION
21 Academy Avenue
Atkinson, New Hampshire 03811

September 12, 2019

New Hampshire State Conservation Committee
P.O. Box 2042
Concord, NH 03302-2042

Dear NH SCC --

The Atkinson Conservation Commission is pleased to submit the enclosed application for a 2020 Moose License Plate Conservation Grant. If approved, this grant will fund a Land Conservation Plan for the Town of Atkinson to help town officials to make wise decisions when considering protecting our dwindling supply of open land.

Our goal is to prepare a comprehensive, data-driven plan for protecting Atkinson's dwindling open spaces and natural resources. The plan will include an inventory of our existing natural resources, a prioritization of the environmental qualities we seek to protect, an analysis of which parts of town should be a priority for permanent protection, and an action plan with strategies to focus our effort and leverage our Conservation Fund to protect them.

I would like to thank you for considering this application, and look forward to working with you as we seek to conserve our town's natural resources.

Sincerely,



Paul Wainwright
Chair, Atkinson Conservation Commission

For SCC use only



New Hampshire State Conservation Committee
PO Box 2042 ÉConcord, NH 03302-2042

Conservation “Moose Plate” Grant Program
Fiscal Year 2020 Application Form

Instructions are not included in this Application Form. Refer to the State Conservation Committee’s *Fiscal Year 2020 Conservation Grant Application Instructions*. Note that section character limits include characters and spaces. This form is in “Protected View” and may require “Enable Editing” to complete.

Section I: Summary Application Information

1. Project Title (Character Limit 75)

Town of Atkinson Land Conservation Plan

2. Applicant Organization

Name: Atkinson Conservation Commission

Mailing address

21 Academy Ave.
Atkinson, NH 03811

Organization Name (if the above-named applicant is serving only as the fiscal agent for the grant):
Same

3. Grant Request: \$ 6379.23

4. Legal Contact (person authorized to sign Application and Grant Agreement)

Name: Paul Wainwright

Title: Chair, Atkinson Conservation Commission

Mailing address:

See Above.

Telephone: (603) 362-6589

Email: paul@paulwainwrightphotography.com

5. Project Contact (if different from Legal Contact)

Name: See Above

Title:

Mailing address:

Telephone:

Email:

6. Select Primary Contact

Select project documents and communications will be sent to: Legal Contact or Project Contact

7. Project Location

Street Address:

Various

Municipality: Atkinson

County: Rockingham

NH Congressional District: Rockingham 14

State Senate District: 22

8. Applicant Type: *Select one*

- County Conservation District
- County Cooperative Extension Natural Resource Program
- Municipality (including agencies and commissions engaged in conservation programs)
- Qualified nonprofit organization (engaged in conservation programs)
- Public and private school (Kindergarten through Grade 12)
- Scout group

9. Project Dates

A. Project Start Date: March 1, 2020

B. Project Completion Date: December 1, 2021

10. Overall Project Goal (Character Limit 400)

Our goal is to prepare a comprehensive, data-driven plan for protecting Atkinson's dwindling open spaces and natural resources. The plan will include an inventory of our existing natural resources, a prioritization of the environmental qualities we seek to protect, an analysis of which parts of town should be a priority for permanent protection, and an action plan with strategies to focus our effort and leverage our Conservation Fund to protect them.

11. Project Category: *Select One*

- Water Quality and Quantity: Restore, enhance, maintain or protect.
- Wildlife Habitat: Create, restore, enhance, manage or protect.
- Soil Conservation and Flooding: Reduce or prevent erosion, or improve soils.
- Best Management Practices: Plan and implement for agriculture, storm water or forestry.
- Conservation Planning: Accomplish a conservation project or outcome that includes a public involvement component.
- Land Conservation: Permanent land protection through conservation easement or fee acquisition and / or associated transaction and stewardship costs.

12. Landowner Consent

- Yes (Appendix SCC Landowner Consent Form)
- Not Applicable (only for projects that are not parcel specific)

13. SCC Conservation Grant Program Public Awareness

If awarded grant, the recipient will promote SCC Conservation Grant Program: Yes or No

14. Previous SCC Conservation Grant Awards

A. Recipient of a SCC Conservation Grant: Yes or No

B. Award date of most recent SCC Grant: NA or Date: 2003

C. Status (Character Limit 300): NA or
Status: Closed 2005

15. Authorization (Original paper copy signed in ink)



September 12, 2019

Signature of legal contact

Date

Type Name: Paul Wainwright

Type Title: Chair, Atkinson Conservation Commission

16. Project Application Checklist

- Section I. Summary Application Information. Signed by Legal Contact
- Section II. Project Proposal Narrative
- Section III. Stewardship and Long-Term Management
- Section IV. Budget: Task Budget and Total Project Budget
- Section V. Appendices
 - 1. Project Site Map (required)
 - 2. Regional Map (required)
 - 3. Natural Resource Maps (if applicable)
 - 4. Photographs (if applicable)
 - 5. Landowner Consent (if applicable)
 - 6. Project Site Plan (if applicable)
 - 7. Permits and Approvals (if applicable)
 - 8. Letters of Support (optional)
 - 9. Other Supporting Documentation (if applicable)

Section II: Project Narrative

1. Project Overview. Project Goal and Statement of Need (Character Limit 3,000)

- A. Project Goal
- B. Statement of Need

A. Project Goal

We will define a strategic Land Conservation Plan to focus the use of the Town of Atkinson's limited land acquisition funds to protect high-value lands such as wildlife habitat, upland buffers surrounding wetlands, and other important natural resources. The plan will start with an update to our maps of conservation-related information such as Town Forest lands, Cluster Development open space lands, and privately-owned lands under conservation easement. A task force of citizens representing a range of backgrounds and opinions will then develop a prioritized set of conservation values that are important to the Town of Atkinson. This task force will go on to study Atkinson's lands, looking for areas that contain one or more of the prioritized conservation values we seek to protect, and maps showing the aggregated conservation values will be produced, using a statistical analysis processes. The Plan will then recommend an "action plan" to guide town officials when making decisions about protecting parcels of land, and will include a summary of external funding sources to leverage our relatively modest Conservation Fund.

B. Statement of Need

Atkinson has experienced rapid growth due to its central location to major employment centers and the metropolitan Boston region. Land values have also increased dramatically, pitting development profits against the town's land conservation interests. In the last 10 years, a number of residential subdivisions have eliminated large parcels of high conservation value from the possibility of preservation. With only a handful of large parcels remaining, the Conservation Commission feels it is critical to prepare a strategic and prioritized Land Conservation Plan to focus the use of the town's land conservation funds for maximum conservation benefit.

2. Conservation Priorities (1,000 Character Limit per Conservation Priority)

A. Soil

One aspect of our Land Conservation Plan will be the identification of properties that have high soils value, as identified by the NRCS soils information maps and other similar studies. The Land Conservation Plan will raise awareness of the importance of these high-value agricultural and forest land soils, and will assist the Conservation Commission and other Town officials in permanently protecting prime, statewide, and locally important soils. Atkinson still has several active working farms and unspoiled forested areas, and these are important elements of our natural and scenic environments.

B. Water

Perhaps the most important outcome of our Land Conservation Plan will be to focus the Town's awareness of the importance of protecting land, because that, in turn, will protect water, including drinking water quality and quantity, wetlands, surface water, aquatic habitats, and water for recreation. This is an extremely ðhotö topic for the entire region since over the past few years there have been growing issues with both groundwater contamination and drinking water wells that are running dry.

While many of Atkinson's residents get their drinking water from individual, private wells, approximately 40% receive their water from a community water supplier (Hampstead Area Water Company), which has large-capacity wells in our town and the region. These well-head protection areas will be identified, and this will help the Conservation Commission to include these Source Water Protection Areas in the list of priorities.

Atkinson has eight Prime Wetlands, and while these are protected from direct harm by Town zoning and State regulations, the Atkinson Conservation Commission seeks to conserve more of the surrounding uplands that serve to protect these Prime Wetlands. A well-crafted Plan will help identify and prioritize these buffer lands.

C. Plants

Another aspect of the Land Conservation Plan will be the inclusion of rare, threatened, and endangered plant species as part of the prioritized conservation values we seek to protect. This will be done by requesting maps of endangered species and exemplary natural communities from the NH Natural Heritage Bureau, including these maps in the Plan's report (if appropriate), and including the locations of important plant habitat when considering the areas of town for permanent protection.

D. Wildlife and Fisheries

A focus of future land conservation efforts may include: protection of forests for timber and wildlife habitat, prime wetlands and their supporting landscapes and buffers, and threatened and endangered species, and wildlife and riparian corridors.

According to NH Fish and Game maps, Atkinson is known to contain populations of threatened and endangered wildlife species, including Blanding's and Spotted Turtles. At with plant species, maps of the locations of these populations will be included, and these locations will be included in our analysis of conservation values we seek to protect.

E. Air

Permanently protecting open spaces reduces the human impact on air quality by preserving the ability of our landscape to absorb carbon dioxide. Protection of large blocks of forested lands will serve to reduce air pollution, moderate air temperature, and provide carbon sequestration to combat climate change. Furthermore, permanently protecting open land instead of developing it will reduce the number of residences, which, in turn, will reduce the demands placed on our atmosphere.

F. Climate Adaptation and Resiliency

A focus of future land conservation efforts may include: retention of forested lands and wetlands for carbon sequestration; minimize local flooding and erosion from increased precipitation and extreme weather events; and reduction or prevention of species stressors including habitat conversion due to increased temperature, and habitat fragmentation, reduction and loss. The Open Space Plan will contemplate management strategies to accommodate anticipated habitat conversion and habitat in/out-migration resulting from the impacts of climate change.

3. Other criteria that support the project (Character Limit 3,000)

A major part of the work to develop the Land Conservation Plan will be outreach and community involvement, both through the Task Force, who will define our conservation priorities and evaluate lands in town that exemplify them, and through a survey and/or round table discussion to gather broad input about our future direction. Also, Community Forums will be held to brief the Town with important progress reports, as well as a final presentation when the Plan is completed.

It is anticipated that community education and awareness will be an important byproduct of our planning work.

Another focus of future land conservation efforts will be to address other emerging environmental issues, including:

- Prevent/remediate groundwater/drinking water contamination - the town and EPA are currently remediating an industrial release of 1,4 dioxane which has contaminated some residential drinking water wells in town.
- Prevent other emerging contaminants such as PFAS.
- Ensure water quality and stormwater standards of the 2018 EPA MS4 permit are met.

4. Regional Context (Character Limit 3,000)

- A. Contributes to resolving the problem or need in the geographic region and/or watershed.
- B. Contributes to natural resources connectivity.
- C. Cite local, regional or statewide plans and studies.
- D. Maps

A - Refer to the attached excerpt from the Merrimack River Watershed Plan conservation priorities map (see Appendix page 2) which shows Atkinson as an island of conservation potential between the highly developed towns of Plaistow and Salem, NH along the Route 125 and I-495 corridors and the urbanized border with Massachusetts.

B - Atkinson already works in close cooperation with the Conservation Commissions in our neighboring towns of Salem, Plaistow, and Hampstead, NH. We share conservation trail networks with Hampstead and Plaistow, and many of our open spaces worthy of permanent protection abut similar lands in our neighboring towns. Natural Resource Connectivity, as identified in sources such as the NH Wildlife Action Plan and NH GRANIT Conservation/Public Lands data layer, will undoubtedly be one of the important conservation criteria that the Plan seeks to permanently protect. Also, Big Island Pond is an important natural resource for the region, and it is bordered by Atkinson, Hampstead, and Derry.

C ó Many regional and state-wide studies are available to assist the planning work (see Appendix page 3). Of particular interest will be the Merrimack River Watershed Plan and maps (<https://merrimackconservationpartnership.org/resources/conservation-plan/>), and the NH Wildlife Action Plan maps for exemplary wildlife habitat in Atkinson.

D ó See Appendix, page 3.

5. Project Task Description, Measurable Results, Budget Description and Justification

(Character Limit 4,400)

- A. Task Number and Description.
- B. Timeframe.
- C. Measurable Results.
- D. Budget Description and Justification.

We will address each task sequentially, and will include the above-requested information for each task.

Budgeted hours quoted for each task are explained in "Budget Notes" in Appendix pages 9f & 9g.

Task #0: "Figure out what we want to do." By the time you read this, this task will be complete. In this initial phase of the planning work, the Atkinson Conservation Commission has reviewed similar plans from other towns, defined the areas that Atkinson's Plan should address, produced an outline for the plan, which is attached in the Appendix (pages 9b), identified the work needed to accomplish each section of the Plan, and, when outside assistance was deemed necessary, obtained estimates from qualified professionals for the funding needed to accomplish the work. We also conservatively estimated the volunteer hours needed for each section of the Plan, and have included these in our budget at the rate of \$25.76/hour, as defined here: https://independentsector.org/resource/vovt_details/. The culmination of this "Task #0" was to write this Moose Plate Grant Proposal, which you are now reading.

This initial phase of our planning effort was done with the assistance of the Rockingham Planning Commission, and the cost for this was paid for, in part, with a grant from the Grassroots Environmental Fund.

Task #1: Write the first four sections of the plan, which are:

- Purpose of the Land Conservation Plan
- A Brief History of Land Conservation in Atkinson
- Reasons for Conserving Land (RPC writes)
- Methods for Conserving Land (RPC writes)

Information for these sections can be gathered from existing sources, as described in the attached Outline.

Timeframe: March - April, 2020

Measurable results - A written draft, which will be reviewed at the Conservation Commission's May, 2020 meeting, and which will be presented to the public in a Community Forum progress report.

Budget: RPC hours:17; volunteer hours (writing and review, and Community Forum preparation and presentation): 30.

Task #2: Research and write Section 5 "Current State of Land Conservation in Atkinson"

This task will document the current state of conservation in Atkinson. Working with Avitar, the Town's tax map consultant, we will be creating (or updating) GIS layers showing the following:

- Town Forest lands
- Other Town-owned land
- Dedicated Open Space from cluster developments
- LWCF-funded land (distinguishing conservation and recreation areas)
- Current Use parcels (distinguishing which have public access allowed)
- Privately-owned land permanently protected by a conservation easement
- Prime Wetlands
- Conservation trails
- Lands allowing or restricting hunting

In addition to creating or updating our own map layers, this Task will also assemble all applicable maps from public sources, such as the Wildlife Action Plan, soils, endangered species, and well-head protection areas, and will use these in the prioritization process described in Task #4, below. A representative list of possible maps is contained in Appendix section 3.

An important benefit of the map layer work described above will be the transmission of this data to GRANIT.

Timeframe: May - July, 2020

Measurable results: a set of map layers depicting the above information, a short narrative explaining the content of each layer, and a compilation of other applicable maps (see Appendix section 3). These will be reviewed at the Conservation Commission's August, 2020 meeting.

Budget: RPC:14 hours; Avitar:24.5 hours; volunteer hours (gathering parcel information from tax records, writing the narratives, and reviewing the maps): 40.

Task #3: Write Section 6 - "Attributes That Make Land Worthy of Conservation"

There are two parts to this task, which will be performed by a Task Force of volunteer citizens. The first part will be to define, in narrative form, all the various attributes and conservation values that might be considered to be "selection criteria" when contemplating protecting a piece of land. Once this list is complete, the Task Force will prioritize the attributes' importance for Atkinson, and will define a numerical scoring system that can be applied to a piece of land. This is an iterative process aimed at getting broad consensus for what the Town "values" in its conservation lands. One activity to accomplish this might be to conduct a follow-up survey from the 2015 Master Plan to ascertain current opinions about land conservation. Another activity might be to hold a community round table discussion to learn what conservation values are important to Atkinson's citizens. This task will be led by the Rockingham Planning Commission.

Timeframe: August - October, 2020

Measurable results: A narrative of attributes that make land worthy of protection, and a prioritized table of attributes, with descriptions of how to "score" each attribute. These will be reviewed at the Conservation Commission's November, 2020 meeting, and presented in a Community Forum progress report.

Budget: RPC: hours: 30; volunteer hours: 40

Task #4: Research and produce Section 7 - "Conservation Priorities for the Town of Atkinson"

Led by the RPC, the Task Force will then apply the attributes defined in Task #3 to specific areas in town, and will generate a numerical "conservation score" for each. Using this data, RPC will then apply statistical analysis techniques to graphically display the scores, producing maps of Atkinson similar to the maps of Fremont which are contained in the Appendix (pages 9c, 9d, & 9e). The colors on these maps reflect the relative importance of protecting land in various parts of town.

Timeframe: November 2020 ó January 2021

Measurable Results: Maps of Atkinson showing the relative conservation values of various areas in town, that can be used to prioritize conservation efforts to permanently protect high-priority lands. These maps will be reviewed at the February, 2021 Conservation Commission meeting, and presented in a Community Forum progress report.

Budget: RPC hours: 34; volunteer hours: 40

Task #5: Tasks include the following:

- Research and write Section 8 – Sources of Funding (RPC writes)
- Write Section 9 – Conclusions and Recommendations
- Overall editing and review of the Plan Document
- Community Forum to present the Plan to the Citizens of Atkinson

Timeframe: February – March 2021

Measurable results: the completed Plan Document, and a PowerPoint presentation summarizing the planning process and content of the Plan Document.

Budget: RPC hours: 26; volunteer hours: 40

6. Total Project Budget (Character Limit 2,000)

- A. Total Project Budget
- B. Other Project Funds

A – Total Project Budget

As documented in the Budget Spreadsheet, the budget costs are as follows:

- SCC Grant Funds Requested - \$6,379.23
- Other Project Funds: Cash - \$6,379.23
- Other Project funds: In-Kind - \$4,894.40
- Total Project Budget: \$17,652.86

The Budget Spreadsheets and Budget Notes on Appendix pages 9f & 9g are color-coded with highlighting to help distinguish the various categories of expense that are anticipated.

B – Other Project Funds

The Atkinson Conservation Commission has voted to use Conservation Fund money as the cash matching funds for this project. The Board of Selectmen will need to hold a public hearing and approve this expenditure, and they have informally indicated that they would likely be in favor of this use of the Town's Conservation Fund.

In-kind funds are very conservative estimates of volunteer time (from Conservation Commission members and other Task Force members) that are anticipated for each Task, and include organizing and directing the work, researching information as needed, and writing or editing the text of the Plan. Volunteer hours do not include residents' participation in surveys, focus groups, or Community Forums, which are too difficult to predict or document. These volunteer hours are evaluated at the rate of \$25.76/hour, as specified here: https://independentsector.org/resource/vovt_details.

7. Applicant Institutional Capacity and Project Partners (Character Limit 3,000)

The Atkinson Conservation Commission is a branch of the Town of Atkinson's municipal government. It was formed in 1974 by vote of the Town, and was established under the provisions of NH RSA 36-A. As such, it is empowered to negotiate both land purchases and land conservation easements on behalf of the Town, contingent upon approval of the Board of Selectmen to expend Town Conservation Funds and/or accept gifts of land or easements.

Since its establishment, the Commission has successfully acquired 514 acres of land with the assistance of organizations such as the Land and Water Conservation Fund (LWCF) and the Land and Community Heritage Investment Program (LCHIP), and has succeeded in obtaining Town approval to designate these lands as Town Forests under the provisions of NH RSA 31:110. The Commission has engaged the services of a professional forester, Charlie Moreno, who has prepared Forest Management Plans for the larger tracts, and who directs periodic selective cuts aimed specifically at maintaining the health of these forests.

The Commission also maintains an extensive trail network on many of the Town Forest lands, and has recently completed GIS-based trail maps. Commission members host regular guided walks in the Woods to introduce members of the public to our open spaces, and encourage their use.

We have a very active Facebook Group (Atkinson Conservation), and we strive to educate and inform the community about conservation-related issues that affect the Town.

The Conservation Commission is composed of 7 regular members, and up to 3 alternates. We are appointed by the Board of Selectmen, and are all volunteers. Among our members we have a surveyor, a retired biologist, several engineers, and several members with corporate management backgrounds, myself included, who are good at organizing and motivating groups of diverse individuals. Two of our members have had Coverts training, and the Chair has applied to attend Coverts next spring.

The Conservation Commission meets on a regular basis - usually the first Monday evening of each month. Our meetings are open to the public, are televised, our agendas are posted ahead of time, and our minutes are posted on the town's web site. We follow a strict policy of having open meetings, and I actively discourage email meetings in which issues might be discussed without public visibility. As Chairperson, my management style is to encourage input from all members, as well as the public, and to work towards forming a consensus on issues.

A copy of our Mission Statement is included in the Appendix Section 9, page 9a.

Project Partners: As indicated in the Task Descriptions, we will be partnering with the Rockingham Planning Commission and with our tax map contractor Avitar, who will play major roles in this planning effort. In addition, our Selectmen and Planning Board are fully supportive of this work (See Appendix pages 8a and 8b for their letters of support).

8. Land Conservation Projects only.

Land Conservation Table. Complete either a Land Conservation Single Property Table (Tab 1) or a Multi-Tract Table (Tab 2), available from SCC website in Excel, separate from the Application Form.

Land Conservation Project Additional Narrative.

A. Public Access (Character Limit 1,000)

The Atkinson Conservation Commission requires Public Access for all lands protected using Town of Atkinson Conservation Fund money, both for land owned by the Town, and for land protected by conservation easement.

B. Conversion Threat and/or Opportunity (Character Limit 1,000)

Atkinson is likely to approach build-out within the next 30 years. It is important that we take prudent steps now to insure that environmentally significant lands in Town are permanently protected for future generations of Atkinson residents.

Section III: Long-Term Project Management and Stewardship

Long-Term Project Management and Stewardship

(Character Limit 3,000)

The purpose of the Land Conservation Plan that will result from this effort is to document the current state of land conservation in Atkinson, define the Town's long-term conservation priorities, survey the Town for areas that exemplify the Town's priorities, and provide an Action Plan to guide Town officials in protecting these natural resources.

As stated elsewhere in this proposal, the Atkinson Conservation Commission has a good track record with stewardship. Not only have we acquired land containing important natural resources, but also we have done a good job managing those lands, both through Forest Management Plans conducted by our Consulting Forester, Charlie Moreno, and through maintaining and promoting trails to encourage the public's access to these lands.

Public access to conservation lands is a key goal of the Atkinson Conservation Commission. Access is one of the prime differentiators between "Conservation Land" and "Cluster Development Open Space" that is set aside to fulfil a zoning requirement, is not open to the public, and is rarely preserved to meet a specific conservation goal.

Going forward, one of our priorities will be to encourage and fund conservation easements, held by third parties, on both town-owned and private land. Not only does this have the potential to be more cost-effective than purchasing land outright, but also it provides better long-term protection for these valuable natural resources.

As of the end of 2018, the Town of Atkinson's Conservation Fund had approximately \$510,000 in it, and the Town has voted to place 99% of the Land Use Change Tax into the Fund. When used as matching funds for grants, this presents an enormous opportunity for additional land conservation in Atkinson. The Atkinson Conservation Commission is able, willing, and highly motivated to guide the Town in making wise, timely decisions regarding conservation of the Town's natural resources.

Section IV. Budget: Task Budget and Total Project Budget

Budget tables are available from SCC website in Excel, separate from the Application Form.

1. Task Budget(s). See Attached, Tabs 1 thru 5

2. Total Project Budget. See Attached, Tab "Total Project Budget"

Individual categories of expense are color coded both in the Budget Tables (spreadsheet tabs) and in the Budget Notes in Appendix pages 9f and 9g

Task Budget																		
Task #1 - Write the first 4 sections of the Plan			Task Budget	\$2,152.42														
Will SCC Grant Funds be used for this task?	<input checked="" type="checkbox"/> Yes <input type="checkbox"/> No		Task Completion Date	May, 2020														
Project Expense	SCC Grant Funds Requested	Other Project Funds: Cash	Other Project Funds: In-kind	Totals SCC + Other Project Cash & In-kind Funds														
Copying and Binding				\$0.00														
Equipment				\$0.00														
Purchases				\$0.00														
Contract Services *	\$680.00	\$680.00		\$1,360.00														
Staff: Wages / Salary				\$0.00														
Administrative				\$0.00														
Other (describe)				\$0.00														
Volunteer writing and review			\$772.80	\$772.80														
Mileage and tolls	\$9.81	\$9.81		\$19.62														
				\$0.00														
				\$0.00														
Total	\$689.81	\$689.81	\$772.80	\$2,152.42														
<table border="1"> <tr> <td>RPC Hourly Rate</td> <td>\$80.00</td> </tr> <tr> <td>RPC Total Hours</td> <td>17</td> </tr> <tr> <td>Volunteer Hourly Rate</td> <td>\$25.76</td> </tr> <tr> <td>Volunteer Total Hours</td> <td>30</td> </tr> <tr> <td>Mileage Rate</td> <td>\$0.545</td> </tr> <tr> <td>Total Miles</td> <td>36</td> </tr> <tr> <td>Tolls</td> <td></td> </tr> </table>					RPC Hourly Rate	\$80.00	RPC Total Hours	17	Volunteer Hourly Rate	\$25.76	Volunteer Total Hours	30	Mileage Rate	\$0.545	Total Miles	36	Tolls	
RPC Hourly Rate	\$80.00																	
RPC Total Hours	17																	
Volunteer Hourly Rate	\$25.76																	
Volunteer Total Hours	30																	
Mileage Rate	\$0.545																	
Total Miles	36																	
Tolls																		
<p>* Contract services are for the Rockingham Planning Commission to prepare and write two of the sections, and to review and provide comments on the other two sections. Also includes RPC attendance at one Conservation Commission meeting.</p>																		

Task Budget				
Task #2 - Research and write Section 5: "Current State of Conservation in Atkinson"			Task Budget	\$4,514.18
Will SCC Grant Funds be used for this task?	<input checked="" type="checkbox"/> Yes <input type="checkbox"/> No		Task Completion Date	August, 2020
Project Expense	SCC Grant Funds Requested	Other Project Funds: Cash	Other Project Funds: In-kind	Totals SCC + Other Project Cash & In-kind Funds
Copying and Binding				\$0.00
Equipment				\$0.00
Purchases				\$0.00
Contract Services *	\$560.00	\$560.00		\$1,120.00
Staff: Wages / Salary				\$0.00
Administrative				\$0.00
Avitar GIS layer creation and editing **	\$1,102.50	\$1,102.50		\$2,205.00
Volunteers (see Task description)			\$1,030.40	\$1,030.40
Mileage and tolls	\$79.39	\$79.39		\$158.78
				\$0.00
				\$0.00
Total	\$1,741.89	\$1,741.89	\$1,030.40	\$4,514.18
				Avitar Hourly Rate \$90.00
				Avitar Total Hours 24.5
				RPC Hourly Rate \$80.00
				RPC Total Hours 14
				Volunteer Hourly Rate \$25.76
				Volunteer Total Hours 40
				Mileage Rate \$0.545
				Total Miles 284
				Tolls \$4.00
<p>* Contract services are for the Rockingham Planning Commission to gather other maps (in addition to the Avitar layers work) that will be needed in evaluating the conservation value of land parcels in Atkinson. RPC will also provide GIS consultation to the Atkinson CC, who will then submit the completed GIS layers to the GRANIT database. Also includes volunteer time and mileage to attend 2 meetings at RPC in Exeter, NH. Note: the printing of maps is included in Task #5.</p>				
<p>** Avitar will edit existing layers, and create new layers, as described in the Task Description. Funding includes Avitar's time for two meetings with the Atkinson Conservation Commission at Avitar's location in Chichester, NH, and the Commission's mileage and tolls.</p>				

Task Budget																		
Task #3 - Prepare and write Section 6: "Attributes That Make Land Worthy of Conservation"			Task Budget	\$3,508.88														
Will SCC Grant Funds be used for this task?	<input checked="" type="checkbox"/> Yes <input type="checkbox"/> No		Task Completion Date	November, 2020														
Project Expense	SCC Grant Funds Requested	Other Project Funds: Cash	Other Project Funds: In-kind	Totals SCC + Other Project Cash & In-kind Funds														
Copying and Binding				\$0.00														
Equipment				\$0.00														
Purchases				\$0.00														
Contract Services *	\$1,200.00	\$1,200.00		\$2,400.00														
Staff: Wages / Salary				\$0.00														
Administrative				\$0.00														
Other (describe)				\$0.00														
Volunteers (see Task description) - see Note			\$1,030.40	\$1,030.40														
Mileage and tolls	\$39.24	\$39.24		\$78.48														
				\$0.00														
				\$0.00														
Total	\$1,239.24	\$1,239.24	\$1,030.40	\$3,508.88														
<table border="1"> <tr> <td>RPC Hourly Rate</td> <td>\$80.00</td> </tr> <tr> <td>RPC Total Hours</td> <td>30</td> </tr> <tr> <td>Volunteer Hourly Rate</td> <td>\$25.76</td> </tr> <tr> <td>Volunteer Total Hours</td> <td>40</td> </tr> <tr> <td>Mileage Rate</td> <td>\$0.545</td> </tr> <tr> <td>Total Miles</td> <td>144</td> </tr> <tr> <td>Tolls</td> <td></td> </tr> </table>					RPC Hourly Rate	\$80.00	RPC Total Hours	30	Volunteer Hourly Rate	\$25.76	Volunteer Total Hours	40	Mileage Rate	\$0.545	Total Miles	144	Tolls	
RPC Hourly Rate	\$80.00																	
RPC Total Hours	30																	
Volunteer Hourly Rate	\$25.76																	
Volunteer Total Hours	40																	
Mileage Rate	\$0.545																	
Total Miles	144																	
Tolls																		
<p>* Contract services are for the Rockingham Planning Commission to facilitate the community effort to identify, prioritize, and set metrics for evaluation criteria that reflect Atkinson's conservation priorities. Includes RPC time to prepare for these sessions, prepare materials, and mileage to attend 4 meetings in Atkinson.</p>																		
<p>Note: Volunteer time includes the organizing and supervising of community surveys and other opinion-gathering events, but does not include the time spent by general citizens to answer survey questions or otherwise provide their opinions.</p>																		

Task Budget																		
Task #4 - Research and produce Section 7: "Conservation Priorities for the Town of Atkinson"			Task Budget	\$3,868.12														
Will SCC Grant Funds be used for this task?	<input checked="" type="checkbox"/> Yes <input type="checkbox"/> No		Task Completion Date	February, 2021														
Project Expense	SCC Grant Funds Requested	Other Project Funds: Cash	Other Project Funds: In-kind	Totals SCC + Other Project Cash & In-kind Funds														
Copying and Binding				\$0.00														
Equipment				\$0.00														
Purchases				\$0.00														
Contract Services *	\$1,360.00	\$1,360.00		\$2,720.00														
Staff: Wages / Salary				\$0.00														
Administrative				\$0.00														
Other (describe)				\$0.00														
Volunteers (see Task description)			\$1,030.40	\$1,030.40														
Mileage and tolls	\$58.86	\$58.86		\$117.72														
				\$0.00														
				\$0.00														
Total	\$1,418.86	\$1,418.86	\$1,030.40	\$3,868.12														
<table border="1"> <tr> <td>RPC Hourly Rate</td> <td>\$80.00</td> </tr> <tr> <td>RPC Total Hours</td> <td>34</td> </tr> <tr> <td>Volunteer Hourly Rate</td> <td>\$25.76</td> </tr> <tr> <td>Volunteer Total Hours</td> <td>40</td> </tr> <tr> <td>Mileage Rate</td> <td>\$0.545</td> </tr> <tr> <td>Total Miles</td> <td>216</td> </tr> <tr> <td>Tolls</td> <td></td> </tr> </table>					RPC Hourly Rate	\$80.00	RPC Total Hours	34	Volunteer Hourly Rate	\$25.76	Volunteer Total Hours	40	Mileage Rate	\$0.545	Total Miles	216	Tolls	
RPC Hourly Rate	\$80.00																	
RPC Total Hours	34																	
Volunteer Hourly Rate	\$25.76																	
Volunteer Total Hours	40																	
Mileage Rate	\$0.545																	
Total Miles	216																	
Tolls																		
<p>* Contract services are for the Rockingham Planning Commission to facilitate Town volunteers to evaluate sections of town, using the criteria established in Task #3, and, using statistical methods, to produce a set of color-coded maps of Atkinson depicting the town's conservation values. Included is funding for RPC to attend 2 meetings with Atkinson residents, and volunteer time and mileage to attend 2 meetings at RPC in Exeter.</p>																		

Task Budget																		
Task #5 - Research and write "Other Sources of Funding" section, and "Conclusions and Recommendations" section.			Task Budget	\$3,609.26														
Will SCC Grant Funds be used for this task?	<input checked="" type="checkbox"/> Yes <input type="checkbox"/> No		Task Completion Date	April, 2021														
Project Expense	SCC Grant Funds Requested	Other Project Funds: Cash	Other Project Funds: In-kind	Totals SCC + Other Project Cash & In-kind Funds														
Copying and Binding	\$220.00	\$220.00		\$440.00														
Equipment				\$0.00														
Purchases				\$0.00														
Contract Services *	\$1,040.00	\$1,040.00		\$2,080.00														
Staff: Wages / Salary				\$0.00														
Administrative				\$0.00														
Other (describe)				\$0.00														
Volunteers (see Task description)			\$1,030.40	\$1,030.40														
Mileage and tolls	\$29.43	\$29.43		\$58.86														
				\$0.00														
				\$0.00														
Total	\$1,289.43	\$1,289.43	\$1,030.40	\$3,609.26														
<table border="1"> <tr> <td>RPC Hourly Rate</td> <td>\$80.00</td> </tr> <tr> <td>RPC Total Hours</td> <td>26</td> </tr> <tr> <td>Volunteer Hourly Rate</td> <td>\$25.76</td> </tr> <tr> <td>Volunteer Total Hours</td> <td>40</td> </tr> <tr> <td>Mileage Rate</td> <td>\$0.545</td> </tr> <tr> <td>Total Miles</td> <td>108</td> </tr> <tr> <td>Tolls</td> <td></td> </tr> </table>					RPC Hourly Rate	\$80.00	RPC Total Hours	26	Volunteer Hourly Rate	\$25.76	Volunteer Total Hours	40	Mileage Rate	\$0.545	Total Miles	108	Tolls	
RPC Hourly Rate	\$80.00																	
RPC Total Hours	26																	
Volunteer Hourly Rate	\$25.76																	
Volunteer Total Hours	40																	
Mileage Rate	\$0.545																	
Total Miles	108																	
Tolls																		
<p>* Contract services are for the Rockingham Planning Commission to research other sources of funding (i.e., grants), and write a summary of what is available and how to apply for it. Also included is general review of the completed plan, and the printing of glossy color maps. See details on Appendix page 9f</p>																		

Total Project Budget: Town of Atkinson Land Conservation Plan

Project Expense Descriptions	SCC Grant Funds Requested	Other Project Funds: Cash	Other Project Funds: In-kind	Totals SCC + Other Project Cash & In-kind Funds
Printing & Binding	\$220.00	\$220.00		\$440.00
Equipment				\$0.00
Purchases				\$0.00
Contract Services - RPC	\$4,840.00	\$4,840.00		\$9,680.00
Staff: Wages / Salary				\$0.00
Administrative				\$0.00
Avitar GIS layer creation and editing	\$1,102.50	\$1,102.50		\$2,205.00
Volunteers (see Task description)			\$4,894.40	\$4,894.40
Mileage and tolls	\$216.73	\$216.73		\$433.46
				\$0.00
				\$0.00
Total	\$6,379.23	\$6,379.23	\$4,894.40	\$17,652.86
SCC Grant Funds Percentage of Total budget:				36.1%
Total without "In-Kind"	\$12,758.46			

Section V. Appendices

1. Project Site Map

1 - Non-GIS depiction of Atkinson's tax map showing the current state of conservation in Atkinson. This needs to be updated (some lands are missing), expanded to include the layers mentioned in Task #2, implemented using GIS technology, and submitted to GRANIT.

2. Regional Map

2 - Section of the Forest Society's *Merrimack Valley Regional Strategic Conservation Plan* showing Atkinson as an "island of conservation opportunity" between Plaistow and Salem, New Hampshire.

Source: <https://forestsociety.org/sites/default/files/Final%20Conservation%20Focus%20Area%20Map%20-%20with%20cons%20land%20-%20July%202014.pdf>

3. Natural Resource Maps

Additional maps will be gathered and analyzed as part of Task #2. A representative list of possible maps is contained in Section 3 of the Appendix.

4. Photographs

Not Applicable.

5. Landowner Consent

Not Applicable.

6. Project Site Plan

Not Applicable.

7. Permits and Approvals

Not Applicable.

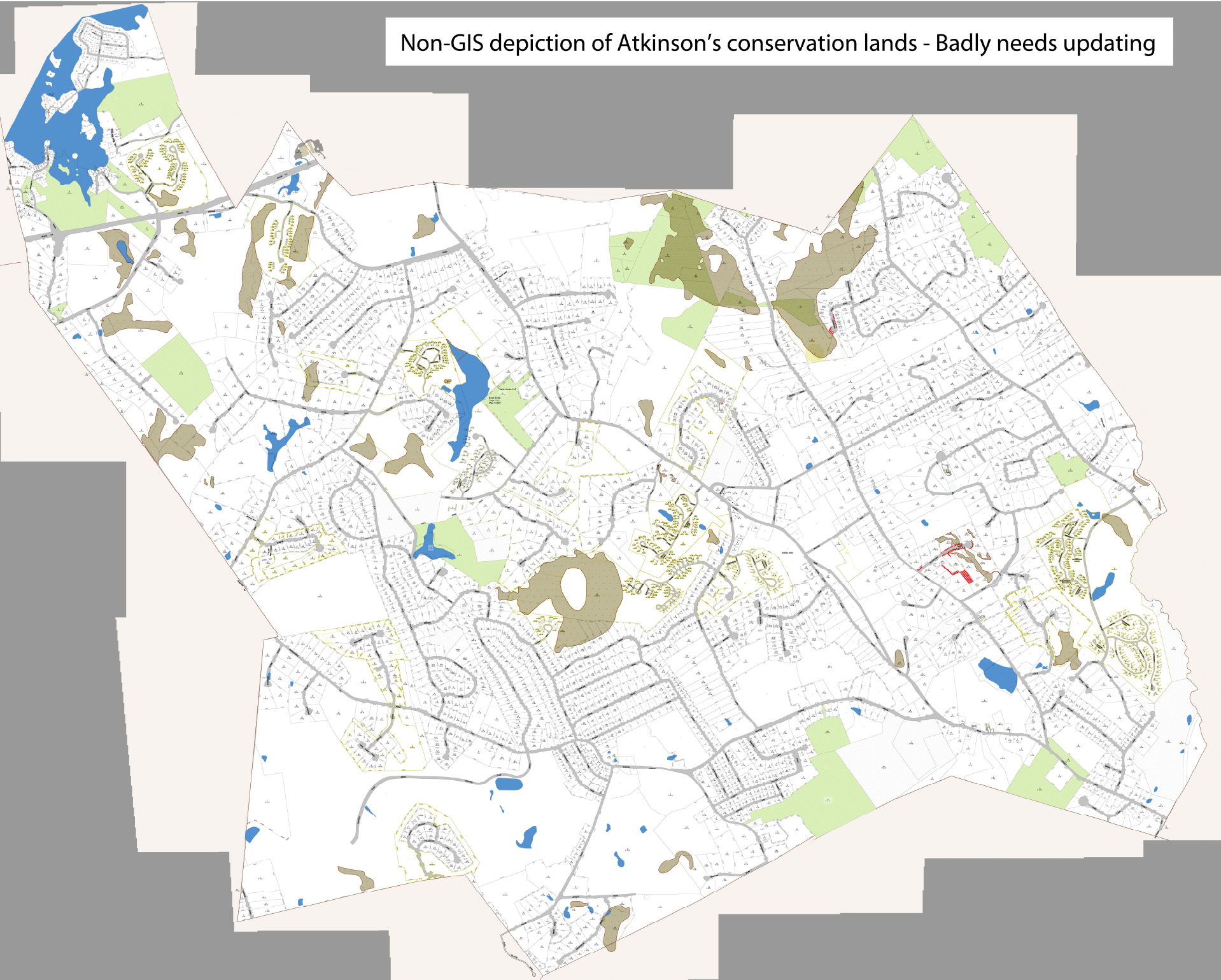
8. Letters of Support

- 8a – Atkinson Planning Board
- 8b – Atkinson Board of Selectmen
- 8c – Southeast Land Trust (SELT)
- 8d – Rockingham Planning Commission (RPC)
- 8e – Rockingham County Conservation District (RCCD)
- 8f – Forest Society (SPNHF)

9. Other Supporting Documentation

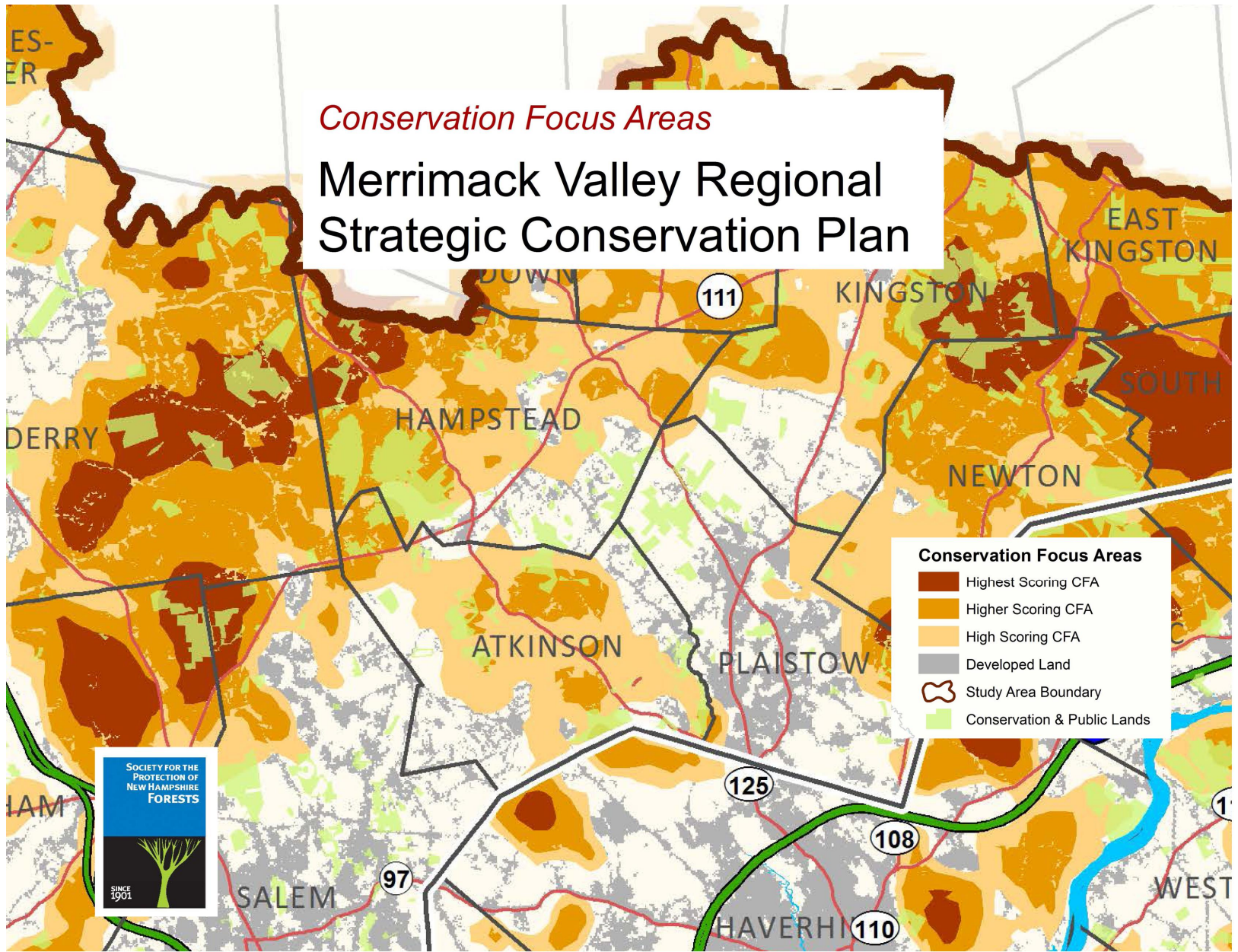
- 9a – Mission Statement for the Atkinson Conservation Commission
- 9b – Sample Outline for the Land Conservation Plan
- 9c, d, & e – Representative example (from Fremont, NH) of Conservation Value Maps to be produced in Task #4.
 - c - Co-Occurrence Analysis
 - d - Proximity (Connectivity) Analysis
 - e - Green Infrastructure (in 2020)
- 9f – Budget Notes: RPC
- 9g – Budget Notes: Avitar and Printing & Binding

Non-GIS depiction of Atkinson's conservation lands - Badly needs updating



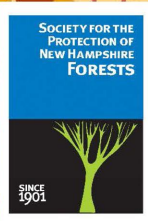
Conservation Focus Areas

Merrimack Valley Regional Strategic Conservation Plan



Conservation Focus Areas

- Highest Scoring CFA
- Higher Scoring CFA
- High Scoring CFA
- Developed Land
- Study Area Boundary
- Conservation & Public Lands

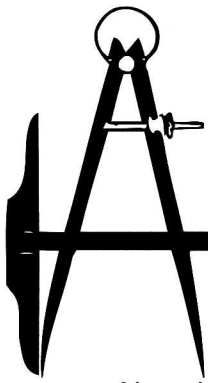


Town of Atkinson Land Conservation Plan

Representative List of Maps to be Gathered and Analyzed

- Wildlife Action Plan Maps (habitat and connectivity)
- FEMA Flood Hazard Maps
- Nature Conservancy Climate Resilience Maps
- NRCS Soils Maps
- NH DES Aquatic Restoration Maps
- NH Fish & Game Endangered and Threatened Species Maps
- Heritage Bureau Endangered Plant Community Maps
- Well-head Protection Maps
- Stratified Drift Aquifer Maps
- Surface Water Resources
- Aerial photographs
- Impervious surfaces maps
- Zoning maps
- Known areas of drinking water contamination: MtBE, 1,4 dioxane, etc.
- Land Use Maps (2015 and earlier)

In addition, see Task #2 for a list of map layers to be generated as part of this work.



ATKINSON PLANNING BOARD

21 Academy Avenue
Atkinson, New Hampshire 03811
Phone: (603) 362-5761 Fax: (603) 362-5305

August 28, 2019

New Hampshire State Conservation Committee
P.O. Box 2042
Concord, NH 03302-2042

Re: Moose Plate Grant proposal: "Town of Atkinson Land Conservation Plan"

Dear NH SCC –

Paul Wainwright, Chair of the Atkinson Conservation Commission, met with the Atkinson Planning Board on August 21, and presented the Commission's plans to develop a comprehensive plan for land conservation in Atkinson.

The Planning Board wholeheartedly applauds and encourages the work proposed by the Conservation Commission on this undertaking. The procedure is well thought out and quite detailed and should bring a wealth of new knowledge to the Planning Board and the Town to help with more informed current and future decisions by these bodies. It will also better inform our Townspeople of what they have and why future protective measures warrant their support.

I strongly encourage you to fully support this important effort for the Town of Atkinson.

Sincerely,

A handwritten signature in blue ink that reads "Susan M. Killam". The signature is fluid and cursive.

Susan M. Killam
Chair, Atkinson Planning Board



Office of the Selectmen
TOWN OF ATKINSON

21 Academy Avenue, Atkinson, NH 03811
603-362-5266 • Fax 603-362-5305
www.town-atkinsonnh.com

September 5, 2019

New Hampshire State Conservation Committee
P.O. Box 2042
Concord, NH 03302-2042

Re: Moose Plate Grant proposal: "Town of Atkinson Land Conservation Plan"

Dear NH State Conservation Committee:

The Atkinson Conservation Commission is proposing to develop a Land Conservation Plan for the Town to assist us to make informed decisions when considering land conservation. To fund this planning work, the Commission has prepared the above-referenced grant application.

Protecting the Town's natural resources is an important element of the Town's Master Plan. There is public concern for the Town's natural resources, particularly water, and invasive species, such as bittersweet. While the Town has used zoning to preserve and protect natural resources, remaining natural resources may be stressed by further development. Preparing a Land Conservation Plan will have the Town define its conservation priorities & provide an Action Plan to guide Town officials in protecting these natural resources.

I strongly encourage you to fully support this important effort for the Town of Atkinson.

Sincerely,

William G. Friel

Chair, Atkinson Board of Selectmen



September 3, 2019

New Hampshire State Conservation Committee
P.O. Box 2042
Concord, NH 03302-2042

Re: Moose Plate Grant proposal: "Town of Atkinson Land Conservation Plan"

Dear NH SCC –

Paul Wainwright, Chair of the Atkinson Conservation Commission, met with me on August 26, 2019, and presented the Commission's plans to develop a comprehensive plan for land conservation in Atkinson, and shared with me a draft of the application for the above-referenced Moose Plate Conservation Grant.

SELT supports Atkinson's efforts to have a land conservation plan that helps it prioritize conservation work in the community. SELT often partners with communities on its land conservation projects and it is extremely helpful to us to understand what the community values with respect to its natural resources and the priority tracts/areas that the Town has identified and why.

I strongly encourage you to fully support this important effort for Atkinson and the southeast New Hampshire region.

Sincerely,

Duane Hyde, Land Conservation Director



September 4, 2019

New Hampshire State Conservation Committee
P.O. Box 2042
Concord, NH 03302-2042

Re: Moose Plate Grant proposal: "Town of Atkinson Land Conservation Plan"

Dear NH SCC:

The Atkinson Conservation Commission has proposed to develop a Land Conservation Plan for the Town of Atkinson. This planning work will conduct an inventory of the Town's existing natural resources, prioritize the environmental qualities they seek to protect, analyze which parts of town should be a priority for permanent protection, and produce an action plan with strategies to focus their efforts and direct funds to protect them. To fund this initial phase of planning work, the Conservation Commission has prepared the above-referenced grant application.

The Rockingham Planning Commission (RPC) recognizes that municipalities that have solid planning goals and plans that reflect them are more likely to be successful in their land conservation efforts and are more competitive when applying for funding. The RPC has a long history of supporting its municipalities in their land conservation efforts and have partnered with many on grant applications and long-range planning. Our region is made stronger when municipalities work as active partners to protect their natural resources and preserve the open space landscapes that are central to our cultural and historical legacy. The Atkinson Conservation Commission's proposal to prepare a Land Conservation Plan also supports the goals and objectives for natural resource and environmental protection in the 2015 RPC Regional Master Plan. <https://www.therpc.org/regional-community-planning/regional-master-plan>

We strongly endorse this important effort proposed by the Town of Atkinson and will work the town directly to support implementation of their Land Conservation Plan.

Sincerely,



Tim Roache
Executive Director



ROCKINGHAM COUNTY CONSERVATION DISTRICT

110 North Road, Brentwood, NH 03833-6614

Tel: 603-679-2790 • Fax: 603-679-2860

www.rockinghamccd.org

September 9, 2019

New Hampshire State Conservation Committee

P.O. Box 2042

Concord, NH 03302-2042

Re: Moose Plate Grant proposal: "Town of Atkinson Land Conservation Plan"

Dear State Conservation Committee members:

The Atkinson Conservation Commission is proposing to develop a Land Conservation Plan for the Town to help make informed decisions when considering land conservation. To fund this needed planning work, the Commission has prepared the above referenced request for your consideration.

This is a needed planning process to assist the community with future land conservation options, including potential open space bonds and other funding opportunities. The Commission will work directly with the Rockingham Planning Commission to create the plan, and then the RCCD will likely assist with different implementation phases.

Over the last decade, Southeastern New Hampshire's landscape has changed dramatically. In the late 90's, Rockingham County was comprised of 57.8% of undeveloped forest lands, but that number decreased to 39.3 % in the early 2000's, making it the lowest in the state. This trend in population increases and land development has continued steadily. Yet, this land conversion comes at a cost to our County. Increased urbanization and development results in a loss of important natural resources, which impacts plant and wildlife habitat, water quality, stormwater infiltration, and town aesthetics.

The creation of a conservation plan for Atkinson is a critical first step for planning and prioritizing the town's remaining natural resources. This will aid the town with protection efforts for prioritized resources. This is the most important first step for conservation planning, and it is hoped that the Committee recognizes this need.

The RCCD strongly encourages you to fully support this important planning effort for the Town of Atkinson.

Sincerely,

A handwritten signature in black ink, appearing to read "Tracy Degnan". The signature is fluid and cursive, with a long horizontal stroke at the end.

Tracy Degnan

Senior Project Manager

Rockingham County Conservation District



54 Portsmouth Street
Concord, NH 03301
Tel. 603.224.9945
Fax 603.228.0423

info@forestsociety.org
www.forestsociety.org

September 6, 2019

New Hampshire State Conservation Committee
P.O. Box 2042
Concord, NH 03302-2042

Re: Moose Plate Grant proposal: "Town of Atkinson Land Conservation Plan"

Dear NH SCC

The Atkinson Conservation Commission is about to develop a Land Conservation Plan for the Town to help make informed decisions when considering land conservation. To fund this planning work, the Commission has prepared the above-referenced grant application.

The Forest Society strongly encourages each and every New Hampshire community to go through this important planning process and evaluation of its natural resources. Towns that have a quality conservation plan in place typically conserve more land, and more importantly, the most ecologically important land in their communities.

I strongly encourage you to fully support this important effort for the Town of Atkinson.

If you have questions or need additional information, please do not hesitate to contact me at bhotz@forestsociety.org.

Sincerely,

Brian J. Hotz
Vice President for Land Conservation

TOWN OF ATKINSON CONSERVATION COMMISSION
21 Academy Avenue
Atkinson, New Hampshire 03811

Mission Statement

Approved May 7, 2018

The Atkinson Conservation Commission was established by vote at Town Meeting in March of 1974 (Article 1974-23), and operates under the provisions of RSA 36-A. Our mission is to:

- Provide a focal point within the town for environmental concerns. Be an advocate for the conservation of our natural environment, and raise public awareness of the benefits of open space in our town.
- Serve as an advisory board to the NH State Wetlands Bureau and the Atkinson Planning Board and Zoning Board of Adjustment for permitting and variance issues.
- Manage the Town Forests, as authorized by RSA 31:112 and numerous Town Meeting votes, including but not limited to periodic selective logging, invasive species control, and establishment of public use regulations.
- Inspire, organize, encourage, advise, and educate conservation-minded residents to help maintain the town's conservation trails, and provide signage, blazes, maps, and interpretive markers to facilitate the public's use and enjoyment of our open spaces.
- Actively seek out opportunities to further protect our dwindling open spaces and groundwater resources, including but not limited to purchasing land, or conservation easements to land. Where possible, look for grants to augment our town's Conservation Fund.
- Help town residents understand wetland zoning and state regulations, and advise homeowners with questions about their property, especially those private lands that abut conservation lands.
- Support Scout Troup 9 and similar organizations by providing opportunities, guidance, and modest funding for Eagle Scout and other conservation-related public service projects.

Proposed Outline for a Land Conservation Plan

Atkinson Conservation Commission

Section 1 – Purpose of the Land Conservation Plan

- A relatively short paragraph or two.
- For example: help make informed decisions when considering protecting additional land; spend the town's Conservation Fund wisely; guide efforts to secure grants to augment the town's funds.

Section 2 – A Brief History of Conservation in Atkinson

- A brief history of the Atkinson Conservation Commission. For example: 1974 TM vote to establish the CC and the Conservation Fund, votes to establish Town Forests and the Forest Maintenance Fund, and a general overview of land acquisitions, how they were funded, and restrictions that may exist (such as hunting).
- Discuss the Conservation Fund and the Forest Maintenance Fund: what their purposes are, how they are funded, and balances as of 1/1/2020
- Briefly describe the major responsibilities of a CC as empowered by RSA 36-A
- List the current (2020) members of the Commission
- End with the Conservation Commission Mission Statement, as approved May 7, 2018

Section 3 – Reasons for Conserving Land

- Lift ideas from other towns' plans (with permission)
- Does not have to be very long
- Helps to legitimize/justify our work to acquire additional land and easements
- Should not really need to write this section – the need is obvious – but for completeness it needs to be done
- Written by RPC

Section 4 – Methods for Conserving Land

- Londonderry and Fremont have good examples on this subject
- Written by RPC

Section 5 – Current State of Land Conservation in Atkinson

- Update map layers: Town Forests and other open land owned by the town; cluster open space land created through zoning; privately owned land protected by conservation easements, Current Use land open to public access.
- Include a short narrative describing each of these types of land.
- Gather other maps needed when evaluating the conservation value of land: Wildlife Action Plan etc.
- The map updating part of this will be a fair amount of work, with input from CC volunteers and other Town officials.

Section 6 – Attributes That Make Land Worthy of Conservation

- First list all attributes applicable to land conservation, and write a short narrative of each.
- Prioritize the list for Atkinson
- Define a numerical scoring method to objectively compare the conservation value of different areas in town.
- This will be accomplished with community involvement, for example, through a survey or round-table event.

Section 7 – Conservation Priorities for the Town of Atkinson

- Using the scoring method developed in the previous section, evaluate all areas in town using statistical techniques, and produce a set of color-coded maps showing the relative conservation values of different areas in town.
- Done by the RPC with input from volunteers
- A fair amount of work.

Section 8 – Sources of Funding

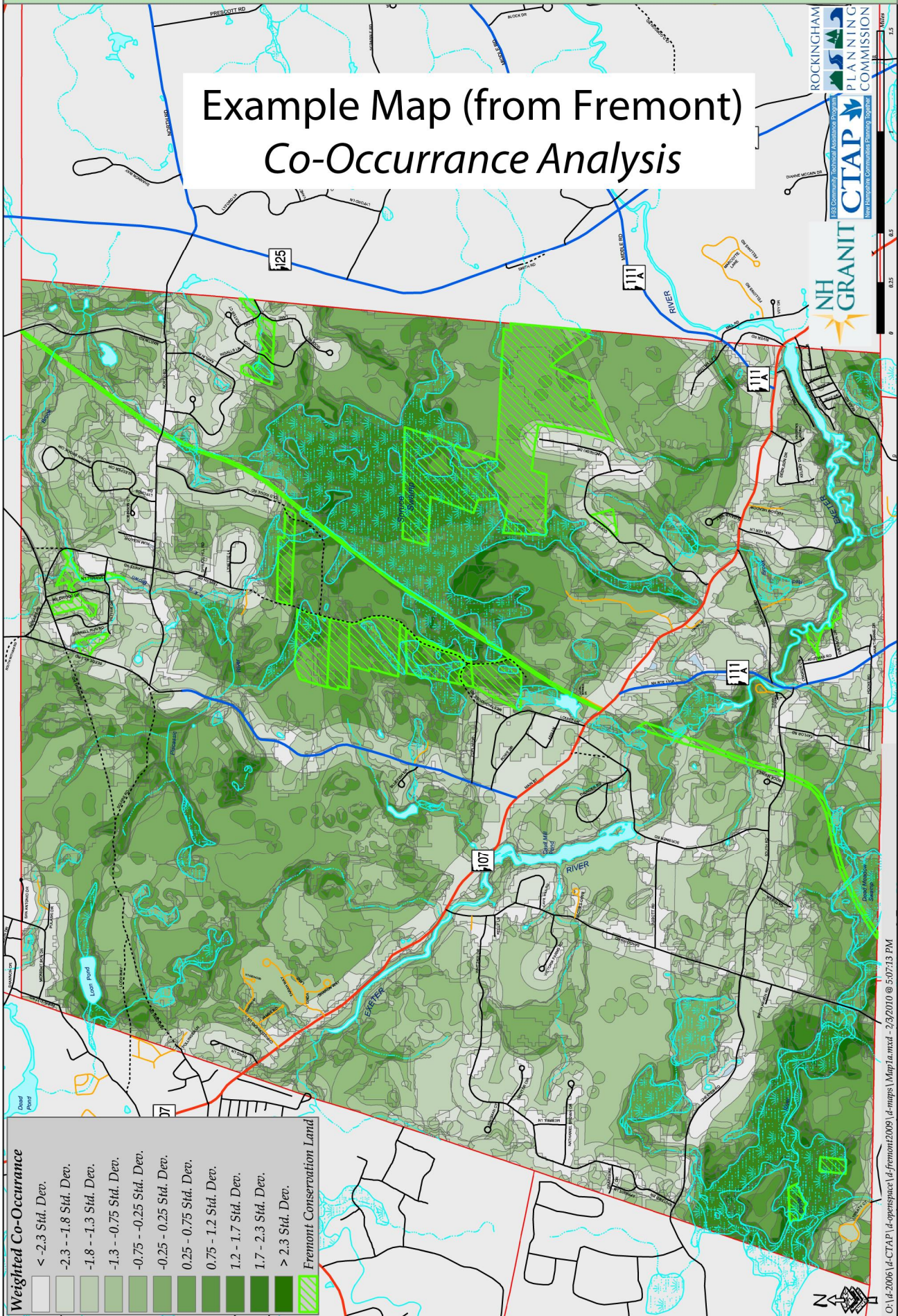
- State the goal: always try to augment the Town’s resources with grant funding; “use the town’s funds as leverage...”
- List the programs that are available as potential sources of grant funding for major land acquisitions. For example, LCHIP, Aquatic Resource Mitigation Fund, Drinking Water and Groundwater Trust Fund, Moose Plate grants, 2018 Farm Bill (farm easements), others? Describe their schedules, processes for applying, what they do and don’t cover, and what matching funds are required.
- List, and briefly describe, potential partner organizations: SPNHF, Southeast Land Trust, The Conservation Fund, others? Discuss what roles they might play in land acquisition and/or easements.

Section 9 – Conclusions and Recommendations

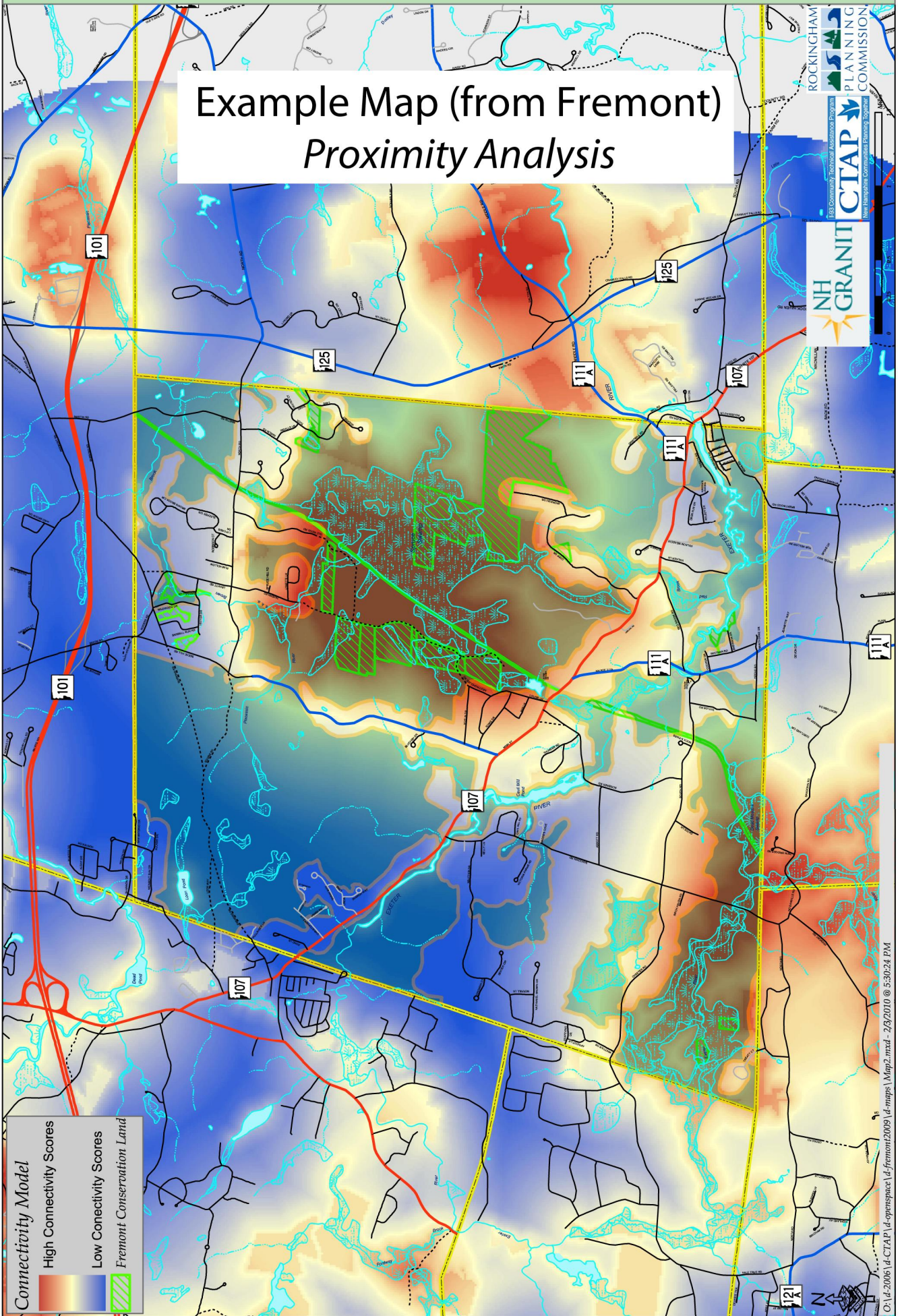
- Reiterate (briefly) the purpose of the plan (from Section 1), and how the information presented in the plan can help fulfil that purpose.
- Any recommendations or “next steps?”
- Thank those who contributed to the plan

Fremont Open Space: Map 1a - Highest Score Natural Co-Occur Areas

Example Map (from Fremont)
Co-Occurrence Analysis



Example Map (from Fremont)
Proximity Analysis



Connectivity Model

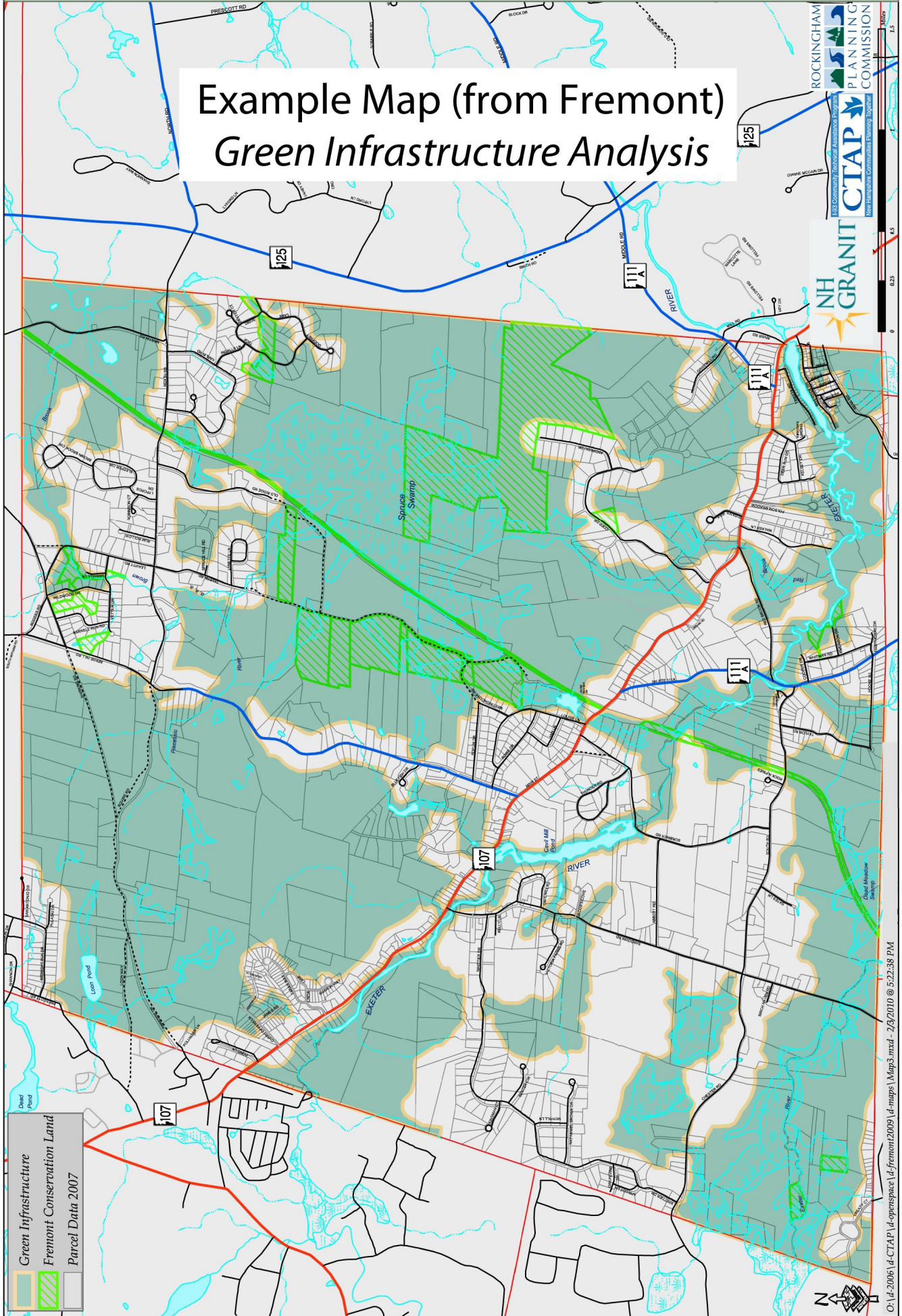
- High Connectivity Scores
- Low Connectivity Scores
- Fremont Conservation Land

ROCKINGHAM
PLANNING
COMMISSION

ES&C Community Technical Assistance Program
NH GRANIT CTAP
New Hampshire Communities Economic Development

Fremont Open Space: Map 3 - Identified Green Infrastructure

Example Map (from Fremont)
Green Infrastructure Analysis



Summary of Budget Notes from RPC meeting on September 4, 2019

Refer to Task Descriptions for more information about the "Activities"

Task #1 - RPC Hours	
Activity	RPC Hours
Review Section 1	2
Review Section 2	2
Research & Write Section 3	5
Research & Write Section 4	5
Attend Cons Comm meeting in Atkinson	3
Total for Task #1	17

Plus mileage

Task #2 - RPC Hours	
Activity	RPC Hours
GIS consulting, reviewing Avitar's work, and preparing non-Avitar maps	14
Total for Task #2	14

Task #3 - RPC Hours	
Activity	RPC Hours
4 meetings in Atkinson (5 hours each)	20
"Office Time" (preparation and research)	10
Total for Task #3	30

Plus mileage x4

Task #4 - RPC Hours	
Activity	RPC Hours
Prepare Study Maps	24
Give 2 presentations to CC in Atkinson	6
"Office Time" (e.g., research or coordination)	4
Total for Task #4	34

2 maps, for example, Co-occurrence
and Proximity (see Fremont examples)
4 hours each, 3 iterations

Plus mileage x2

Task #5 - RPC Hours	
Activity	RPC Hours
Write Section 8 (Sources of Funding)	5
Compile & Review Section 9	6
Overall Plan review and formatting	10
Prepare and give Community Forum presentation	5
Total for Task #5	26

Expect several iterations
Make the Plan look better than MS Word
plus mileage

Avitar Budget Notes - from email communications with Ashton Twombly

See Task descriptions for Activity details

Task #2, Avitar			
Activity	Avitar hours	number	total
Prepare or Edit Map Layers	2.5	7	17.5
Format existing GIS files	1.5	2	3
Meetings with Atkinson CC	2	2	4
Prepare files for GRANIT submission	0		0
Total Avitar for Task #2			24.5

Includes all layers except for Prime Wetlands and Conservation Trails

Will be done by Atkinson CC volunteers

Printing and Binding Budget Notes

Task #5, Printing & Binding line	
Copying:	
Number of copies of Plan Document	4
Pages per copy	60
Reproduction cost per page	\$0.50
Total - printing costs	\$120.00
Spiral Binding:	
Cost per copy	\$10.00
Number of Copies	4
Total - binding costs	\$40.00
Glossy Map Printing	
Number of maps per copy	2
Number of copies	4
Cost per map (RPC estimate)	\$35.00
Total - glossy map printing	\$280.00
Total for Printing & Binding	\$ 440.00

Assumes color reproduction

