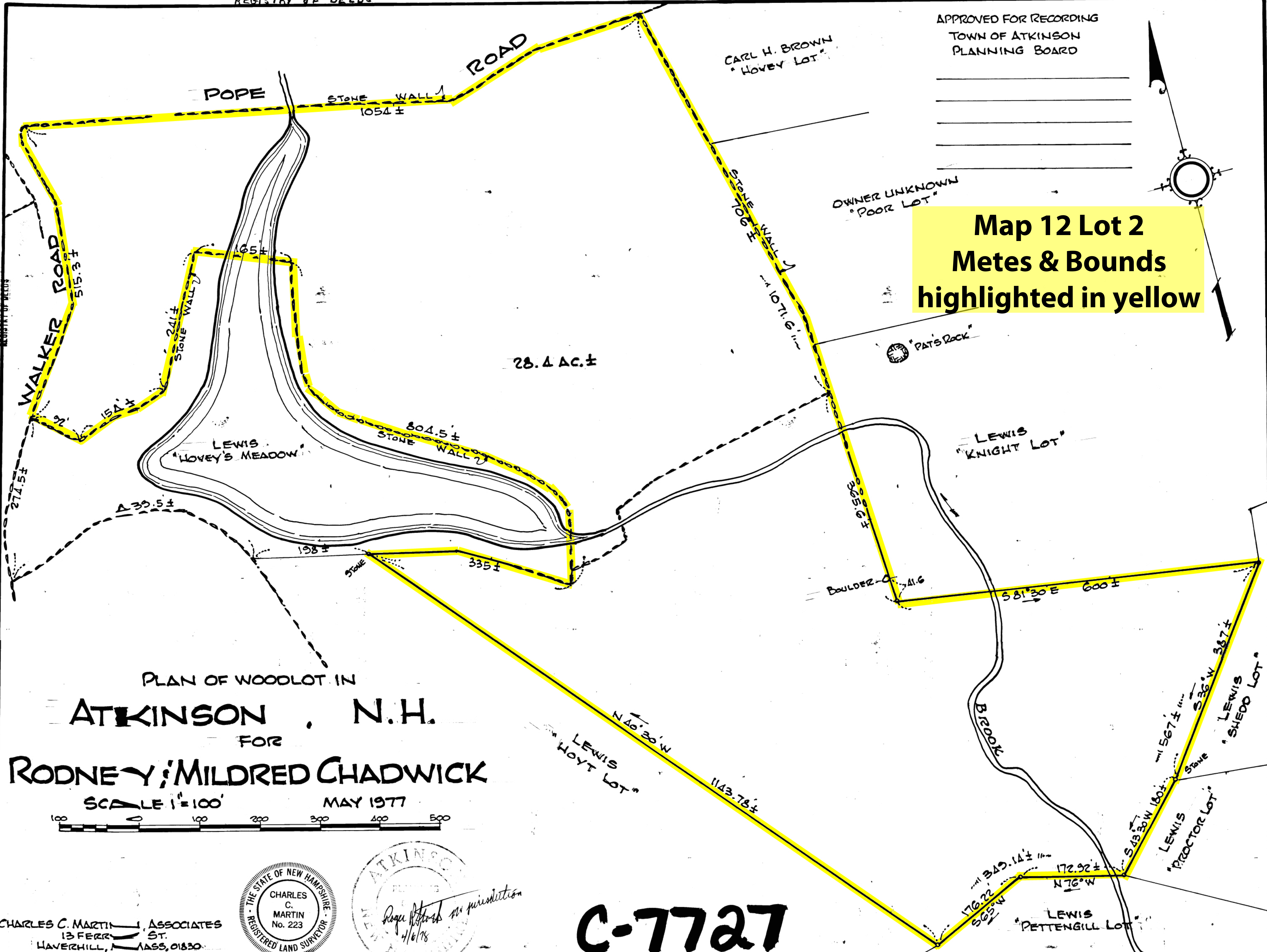


APPROVED FOR RECORDING  
TOWN OF ATKINSON  
PLANNING BOARD

Map 12 Lot 2  
Metes & Bounds  
highlighted in yellow



PLAN OF WOODLOT IN  
**ATKINSON, N.H.**  
FOR  
**RODNEY & MILDRED CHADWICK**

SCALE 1" = 100'  
MAY 1977



Atkinson  
Roger [Signature] per permission  
4/6/78

**C-7727**

CHARLES C. MARTIN, ASSOCIATES  
13 FERRIS ST.  
HAVERHILL, MASS, 01830