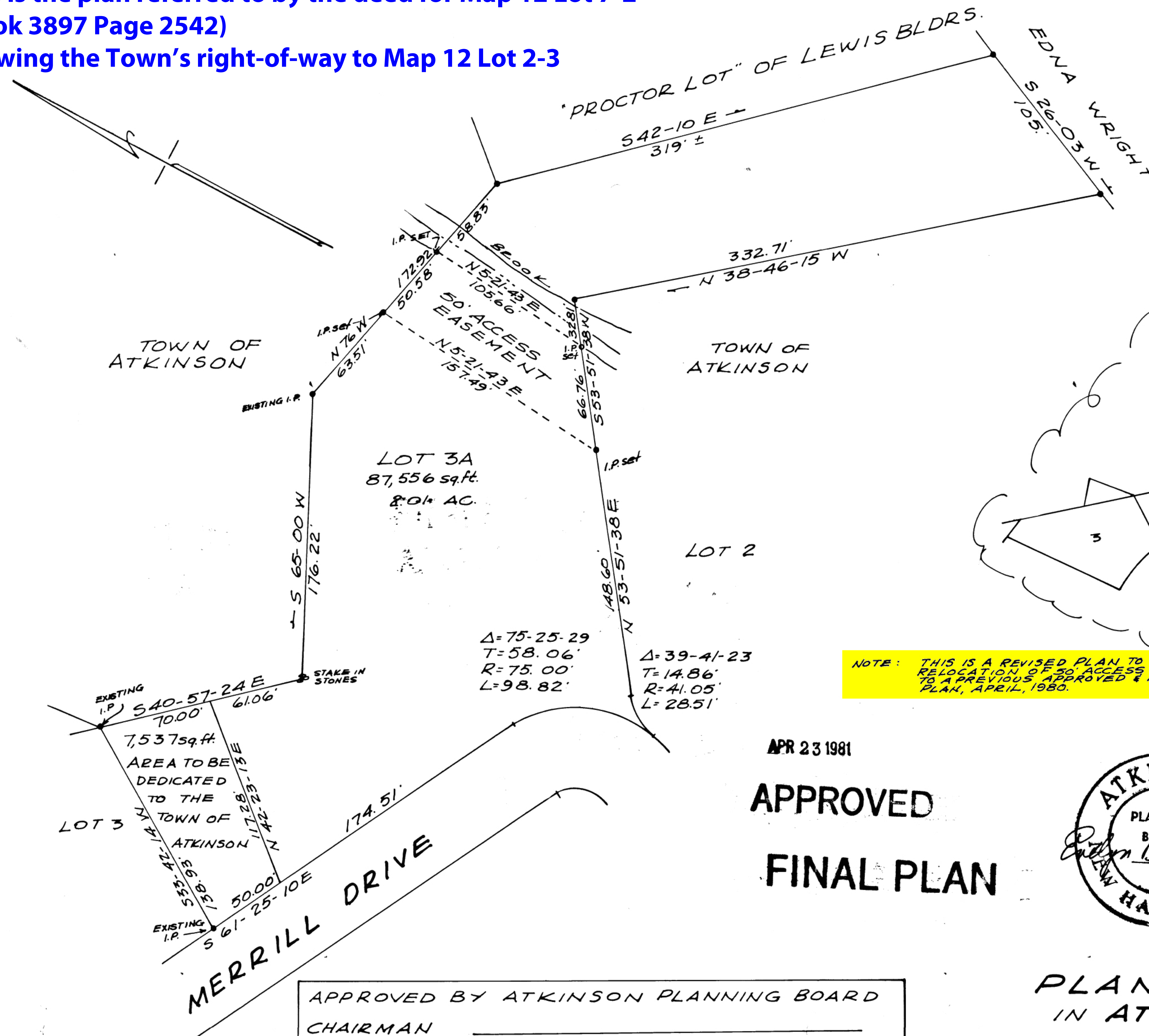


05262

EDWARD N. HERBERT
SURVEYOR
ASSOC. INC.
WINDHAM, N.H.



NOTE: THIS IS A REVISED PLAN TO SHOW
RELOCATION OF 50' ACCESS EASEMENT
TO A PREVIOUS APPROVED & RECORDED
PLAN, APRIL, 1980.

APR 23 1981

APPROVED
FINAL PLAN



**PLAN OF LAND
IN ATKINSON, NH
OWNED BY
LEWIS BUILDERS INC.
SAWYER AVE., ATKINSON, N.H.
SCALE 1"=50' FEB., 1981**

APPROVED BY ATKINSON PLANNING BOARD
CHAIRMAN _____
SECRETARY _____
DATE _____

C-10127

TOEEN ALKINSON